

# ***BRAKE & CLUTCH***

## **Hose**

Rubber Brake Hose	14
Braided Brake Hose	14

## **Accessories**

Rubber Hose Accessories	15
Braided Hose Accessories	17
Grommets	18
Fitting Accessories	19
Fitting Tools	19

## **General Fittings**

Female Swivel	20
Male Swivel	22
Universal	26
Lifesaver	27
Center Joiner	28
Clutch	29
Compression	29

## **Block Banjo**

Universal	30
8mm hole	30
10mm hole	31
11mm hole	38
12mm hole	40
3/8" hole	40
7/16" hole	46

## **Round Banjo**

8mm hole	47
10mm hole	47
11mm hole	57
12mm hole	57
15mm hole	57
3/8" hole	58
7/16" hole	58

## **Imperial Female**

Bolt Mount	59
Bracket Mount	62
Bulkhead Mount	64
Clip Mount	66
Standard	71

## **Metric Female**

Bolt Mount	72
Bracket Mount	73
Clip Mount	74
Spline Mount	83
Bulkhead Mount	83

## **Imperial Male**

JIC Male	84
Bolt Mount	84
Bulkhead Mount	84
Standard	85

## **Metric Male**

Bulkhead Mount	88
Clip Mount	89
Standard	89

## **Center Support**

Bracket Mount	91
Clip Mount	95

## **Brackets**

Fitting Brackets	97
Center Brackets	102
Centers with Grommet	104
11mm hole	116
7/16" hole	116

# HOSE

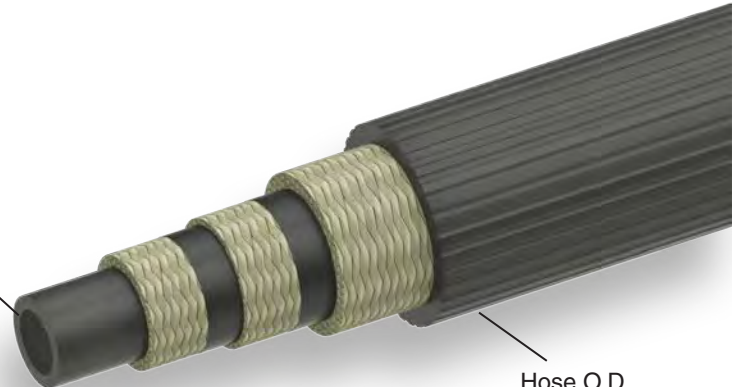
## RUBBER BRAKE HOSE

### Rubber Hose BQ103, BQ105

Carriers	24
Wires per Carrier	4
Hose Wall	0.4" / 10mm
Operating Pressure	1500psi
Burst Pressure	10,000psi
Bend Radius	1.5" / 38mm
Temperature Range	-58°F to 250°F / -50°C to 121°C

Hose I.D.  
0.130"-0.138"  
3.3mm - 3.5mm

Hose O.D.  
0.406"-0.421"  
10.3mm - 10.7mm



Compatible with DOT 3, 4, 5, and most non-petroleum based brake fluids, including silicone.  
Warning: no mineral oils should be used.

## BRAIDED BRAKE HOSE

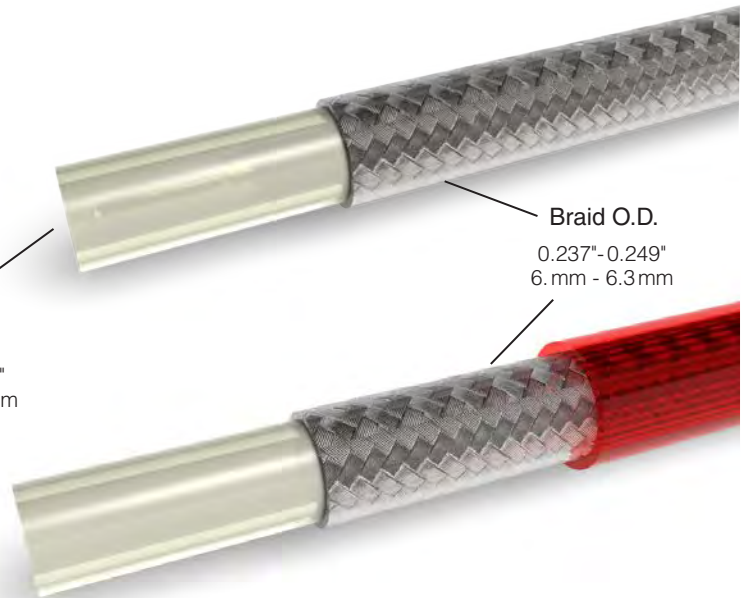
### Unjacketed Braided Hose BQ301 No jacket, for off-road use only.

- Jacketed Braided Hose**
- BQ302BK Solid black jacket
  - BQ303 Clear jacket
  - BQ303RD Red jacket
  - BQ303BL Blue jacket
  - BQ303BK Smoke jacket

Carriers	23
Wires per Carrier	4
Hose Wall	0.4" / 10mm
Operating Pressure	3,000psi
Burst Pressure	12,000psi
Bend Radius	2.0" / 50.8mm
Temperature Range	-65°F to 450°F / -54°C to 232°C

Hose I.D.  
0.125"-0.140"  
3.2mm - 3.6mm

Braid O.D.  
0.237"-0.249"  
6. mm - 6.3mm



Compatible with DOT 3, 4, 5 (silicone-based), and 5.1 brake fluids, plus oil and most fluids.  
Warning: no gases or acids should be used.

# ACCESSORIES

## RUBBER HOSE ACCESSORIES

### Spring Protectors

#### BQ202

Length 50cm



*nylon*

#### BQ11

Length 16"  
Sold in packs of 6



*steel*

### Rubber Protectors

#### BQ201

Sold in 50ft section



*rubber*

#### BQ203

Length 10.4cm



*rubber*

### Strain Relievers

#### BQ200

Sold in 10ft section



*rubber*

#### BQ296

Length 9cm



*rubber*

### Heat Protection Sleeve

#### BQ312-BK

Sold in 10ft section



# ACCESSORIES CONTINUED

## Plastic Clips

**BQ65**

Sold in packs of 6



**BQ66**

Sold in packs of 6



**BQ67**

Sold in packs of 6



**BQ68**

Sold in packs of 6



**BQ69**

Sold in packs of 6



**BQ70**

Sold in packs of 6



**BQ97**

Sold in packs of 6



**BQ98**

Sold in packs of 6



## Rubber Brake Hose Cutter

**BQ2103**



*The blade has two cutting points for double life.*

**Replacement blade  
BQ2101B**



# ACCESSORIES CONTINUED

## BRAIDED HOSE ACCESSORIES

### Crimp Shell Inserts

#### BQ251-BK

Color black



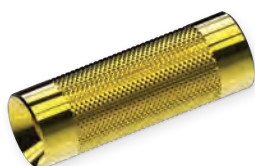
#### BQ251-BL

Color blue



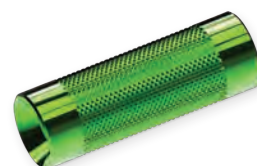
#### BQ251-GD

Color gold



#### BQ251-GR

Color green



#### BQ251-PP

Color purple



#### BQ251-RD

Color red



#### BQ251-SV

Color silver



### Center Support Sleeves

#### BQ310

Sold in 10ft sections

Use with standard profile center support fittings on BQ301 unjacketed braided brake hose.



#### BQ311

Sold in 10ft sections

Use with standard profile center support fittings on BQ303 jacketed braided brake hose (all colors).



### Small Braided Hose Shears

#### BQ2104



### Skiving Tool

#### BQ436

Skives lengths for Standard and Low Profile crimps.

Uses a common No. 9 single-edge razor blade.



/// Skiving instructions are in the [hose assembly manual](#).

# ACCESSORIES CONTINUED

## GROMMETS

These black rubber grommets are for use with **rubber brake hose**. A braided hose equivalent is listed, if available. All rubber hose grommets can be used on braided hose in conjunction with a **center fitting adapter tube**, BQ311.

### BQ210

Diameter 30mm  
Overall length 10mm

Braided hose BQ210BR



### BQ211

Diameter 18mm  
Overall length 25mm

Braided hose BQ211BR



### BQ212

Diameter 22mm  
Overall length 41mm



### BQ213

Diameter 30mm  
Overall length 32mm

Braided hose BQ213BR



### BQ215

Diameter 25mm  
Overall length 22mm

Braided hose BQ215BR



### BQ216

Diameter 28mm  
Overall length 32mm



### BQ217

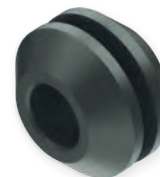
Diameter 25.5mm  
Overall length 29mm



### BQ218

Diameter 25mm  
Overall length 16mm

Braided hose BQ288



### BQ233

Diameter 26mm  
Overall length 24mm



### BQ234

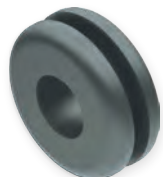
Diameter 19mm  
Overall length 34mm

Braided hose BQ289



### BQ272

Diameter 25.4mm  
Overall length 10mm



### BQ273

Diameter 26mm  
Overall length 8mm



### BQ274

Diameter 18mm  
Overall length 62mm



### BQ275

Diameter 32mm  
Overall length 24mm

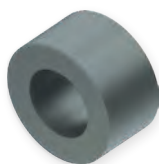


# ACCESSORIES CONTINUED

## BQ276

Diameter 18mm  
Overall length 10mm

Braided hose BQ294



## BQ277

Diameter 14mm  
Overall length 28mm



## FITTING ACCESSORIES

### E-Clip

#### BQ12

Available in packs of 20



### Bracket Retaining Screws

#### BQ71

Available in packs of 50



## FITTING TOOLS

### Standard Banjo Bending Bar

#### BQ22A



### Low Profile Banjo Bending Bar

#### BQ22C



### Banjo Bending Tool Holder

#### BQ22B



/// Banjo bending instructions are in the [hose assembly manual](#).

# GENERAL FITTINGS

## FEMALE SWIVEL 5/16-24 UNF

### HF61

Thread	5/16-24 UNF
Seat type	37° drill-point
Hex	1/2"
Overall length	35 mm



## FEMALE SWIVEL 3/8-24 UNF

### HF09

Thread	3/8-24 UNF
Flare	37° double
Bend	straight
Tube size	3/16"
Overall length	58 mm



Stainless HF09SS

### HF09W

Thread	3/8-24 UNF
Seat type	37° drill-point
Overall length	36 mm



*wire-lock*

Low profile LP chrome LP09W-6  
LP09W-6C

### HF10

Thread	3/8-24 UNF
Flare	37° double
Bend	45°
Tube size	3/16"
Overall length	52 mm



Low profile LP chrome LP10W-6  
LP10W-6C

### HF11

Thread	3/8-24 UNF
Flare	37° double
Bend	90°
Tube size	3/16"
Overall length	45 mm



Stainless HF11SS  
Low profile LP chrome LP11-6, LP11W-6  
LP11W-6C

# GENERAL FITTINGS *CONTINUED*

## FEMALE SWIVEL 7/16-20 UNF

### HF12

Thread	7/16-20 UNF
Flare	37° double
Bend	straight
Tube size	1/4"
Overall length	50mm



Stainless	HF12SS
Low profile	LP12W-7
LP chrome	LP12W-7C

### HF13

Thread	7/16-20 UNF
Flare	37° double
Bend	45°
Tube size	1/4"
Overall length	56mm



Stainless	HF13SS
Low profile	LP13W-7
LP chrome	LP13W-7C

### HF14

Thread	7/16-20 UNF
Flare	37° double
Bend	90°
Tube size	1/4"
Overall length	48mm



Low profile	LP14W-7
LP chrome	LP14W-7C

### HF410

Thread	7/16-20 UNF
Flare	45° double
Bend	45°
Tube size	1/4"
Overall length	56mm



## FEMALE SWIVEL M12×1

### HF102

Thread	M12×1
Flare	45° double
Bend	straight
Tube size	1/4"
Overall length	50mm



# GENERAL FITTINGS CONTINUED

## MALE SWIVEL 3/8-24 UNF

### HF16

Thread	3/8-24 UNF
Flare	45° double
Bend	straight
Tube size	3/16"
Overall length	57 mm



Brass	HF157BT
Stainless	HF16SS
Low profile	LP16-6
LP chrome	LP16-6C
LP stainless	LP16-6SS

### HF17

Thread	3/8-24 UNF
Flare	45° double
Bend	90°
Tube size	3/16"
Overall length	49 mm



Stainless	HF17SS
Low profile	LP17-6
LP chrome	LP17-6C
LP stainless	LP17-6SS

### HF33

Thread	3/8-24 UNF
Flare	45° double
Bend	45°
Tube size	3/16"
Overall length	65 mm



Low profile	LP33-6
LP chrome	LP33-6C
LP stainless	LP33-6SS

### HF43SS

Thread	3/8-24 UNF
Flare	45° single
Bend	straight
Tube size	5 mm
Overall length	69 mm



*stainless*

### HF45SS

Thread	3/8-24 UNF
Flare	45° single
Bend	35°
Tube size	5 mm
Overall length	112 mm



*stainless*

Low profile	LP45-6
LP chrome	LP45-6C

### HF63

Thread	3/8-24 UNF
Flare	45° double
Bend	straight
Tube size	3/16"
Overall length	88 mm



### HF81

Thread	3/8-24 UNF
Flare	bubble
Bend	straight
Tube size	3/16"
Overall length	76 mm



### HF150

Thread	3/8-24 UNF
Flare	45° double
Bend	straight
Tube size	3/16"
Hex mount	5/8"
Overall length	45 mm



# GENERAL FITTINGS CONTINUED

## HF164Z

Thread	3/8-24 UNF
Flare	45° double
Bend	straight
Tube size	3/16"
Hex mount	9/16"
Overall length	51 mm



zinc-nickel

Brass HF164BT

## MALE SWIVEL 7/16-24 UNS

### HF04

Thread	7/16-24 UNS
Flare	45° double
Bend	straight
Tube size	1/4"
Overall length	8 mm



### HF06

Thread	7/16-24 UNS
Flare	45° double
Bend	90°
Tube size	1/4"
Overall length	61 mm



Low profile LP06-7

### HF07

Thread	7/16-24 UNS
Flare	45° double
Bend	45°
Tube size	1/4"
Overall length	76 mm



### HF15

Thread	7/16-24 UNS
Flare	45° double
Bend	straight
Tube size	1/4"
Overall length	52 mm



Stainless HF07SS

Stainless HF15SS

### HF39

Thread	7/16-24 UNS
Flare	45° double
Bend	straight
Tube size	1/4"
Hex mount	16 mm
Overall length	54 mm



### HF94

Thread	7/16-24 UNS
Flare	45° double
Bend	60°
Tube size	1/4"
Overall length	81.7 mm



### HF100

Thread	7/16-24 UNS
Flare	45° double
Bend	straight
Tube size	1/4"
Hex mount	16 mm
Overall length	81 mm



### HF101

Thread	7/16-24 UNS
Flare	45° double
Bend	90°
Tube size	1/4"
Hex mount	16 mm
Overall length	82.2 mm





# GENERAL FITTINGS *CONTINUED*

## HF135

Thread	7/16-24 UNS
Flare	45° double
Bend	straight
Tube size	1/4"
Hex mount	16mm
Overall length	49mm



## HF145

Thread	7/16-24 UNS
Flare	45° double
Bend	110°
Tube size	1/4"
Overall length	135mm



## MALE SWIVEL 1/20-20 UNF

### HF18

Thread	1/2-20 UNF
Flare	45° double
Bend	straight
Tube size	5/16"
Overall length	80mm



### HF28

Thread	1/2-20 UNF
Flare	45° double
Bend	straight
Tube size	5/16"
Hex mount	16mm
Overall length	60mm



### HF29

Thread	1/2-20 UNF
Flare	45° double
Bend	90°
Tube size	5/16"
Overall length	62mm



### HF92

Thread	1/2-20 UNF
Flare	45° double
Bend	90°
Tube size	3/16"
Overall length	53.3mm



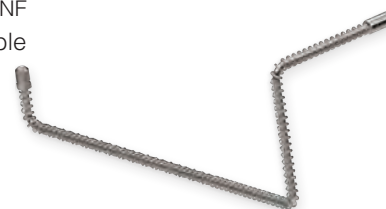
### HF142

Thread	1/2-20 UNF
Flare	45° double
Hex	1/2"
Bend	103°
Tube size	1/4"
Overall length	128.3mm



### HF154

Thread	1/2-20 UNF
Flare	45° double
Hex	1/2"
Tube size	1/4"
Overall length	120mm



## MALE SWIVEL 9/16-18 UNF

### HF98

Thread	9/16-18 UNF
Flare	45° double
Bend	90°
Tube size	1/4"
Overall length	45.1mm





# GENERAL FITTINGS *CONTINUED*

## MALE SWIVEL M10×1

### HF08

Thread	M10×1
Flare	DIN
Bend	straight
Tube size	3/16"
Overall length	70mm



### HF34

Thread	M10×1
Flare	45° double
Bend	straight
Tube size	3/16"
Overall length	71mm



Low profile	LP34-M10X1
LP stainless	LP34-M10X1SS

### HF82

Thread	M10×1
Flare	DIN
Bend	straight
Tube size	3/16"
Overall length	71mm



Low profile	LP82-M10X1
LP zinc-nickel	LP82-M10X1Z

### HF99

Thread	M10×1
Flare	DIN
Bend	95°
Tube size	3/16"
Overall length	49.9mm



### HF115

Thread	M10×1
Flare	DIN
Bend	90°
Tube size	3/16"
Overall length	90.6mm



### HF116

Thread	M10×1
Flare	DIN
Bend	straight
Tube size	3/16"
Overall length	60.5mm



### HF117

Thread	M10×1
Flare	DIN
Bend	25°
Tube size	3/16"
Overall length	57.2mm



### HF158

Thread	M10×1
Flare	DIN
Bend	90°
Tube size	3/16"
Overall length	42mm



Low profile	LP125
-------------	-------

### HF310

Thread	M10×1
Flare	DIN
Bend	straight
Tube size	3/16"
Overall length	72mm



### HF403

Thread	M10×1
Flare	45° double
Bend	90°
Tube size	3/16"
Overall length	65mm



# GENERAL FITTINGS *CONTINUED*

## MALE SWIVEL M12×1

### HF77

Thread	M12×1
Flare	DIN
Bend	straight
Tube size	1/4"
Overall length	57 mm



### HF137

Thread	M12×1
Flare	DIN
Bend	90°
Tube size	1/4"
Overall length	57 mm



### HF404

Thread	M12×1
Flare	45° double
Bend	90°
Tube size	3/16"
Overall length	65 mm



## UNIVERSAL

### HF02

Tube size	3/16"
Overall length	99 mm

Low profile LP02



### HF03

Tube size	1/4"
Overall length	99 mm

Low profile LP03



### HF139

Tube size	1/4"
Overall length	200 mm



/// Instructions for using universal fittings are in the [hose assembly manual](#).

# GENERAL FITTINGS CONTINUED

## LIFESAVER

If the desired hose fitting is unavailable, reuse the customer's original fitting by replacing the crimp shell with a lifesaver. BrakeQuip offers six lifesavers for use with standard brake fittings as well as low-profile and power steering versions.

### Center Support Lifesaver

#### HF05

Overall length 23 mm



### 7 mm Shank Banjo Lifesaver

#### HF120

Tube size 7 mm  
Overall length 27 mm



*Use with 7 mm shank banjo fittings.*

### 3/16" Lifesaver

#### HF01

Tube size 3/16"  
Overall length 27 mm

Stainless HF01SS  
Low profile LP01-3



### 3/16" Tube-Style Lifesaver

#### HF155SS

Tube size 3/16"  
Overall length 27 mm

*stainless*



### 1/4" Lifesaver

#### HF26

Tube size 1/4"  
Overall length 27 mm

Low profile LP01-4



### 5/16" / 8mm Tube-Style Lifesaver

#### HF27

Tube size 5/16"  
Overall length 27 mm

Low profile LP01-5



/// Instructions for using lifesavers are in the [hose assembly manual](#).  
Power steering lifesavers are on page [129](#).  
Low-profile lifesavers are on page [111](#).  
Brazing rods are on page [146](#).

# GENERAL FITTINGS *CONTINUED*

## CENTER JOINER

### HF37

Mount hole 8.3mm (2)  
Tube size 8mm  
Overall length 86mm



### HF38

Mount hole 8.3mm (2)  
Tube size 8mm  
Overall length 86mm



### HF71

Mount hole 8.2mm  
Tube size 7mm  
Overall length 130mm



### HF72

Mount hole 8.2mm  
Tube size 7mm  
Overall length 130mm



### HF73

Mount hole 8.3mm  
Tube size 7mm  
Overall length 95mm



### HF74

Mount hole 8.3mm  
Tube size 7mm  
Overall length 95mm



### HF300

Mount hole 6.6mm  
Tube size 8mm  
Overall length 190mm



# GENERAL FITTINGS CONTINUED

## CLUTCH

**HF35**



**HF62**



**HF83**

*O-ring included.*



**HF114**

| Low profile LP156

*O-ring included.*



**HF125**

*O-ring and  
release included.*



## COMPRESSION

Compression fittings are not recommended for hydraulic braking systems. These fittings are intended for clutch hydraulic hoses and general industrial hydraulic applications.

**HF30**

Tube size 3/16"  
Hex 1/2"



**HF31**

Tube size 1/4"  
Hex 14mm

| Stainless HF31SS



# BLOCK BANJO

## 10 MM HOLE UNIVERSAL

### HFB22

Hole	10 mm
Thickness	11.5 mm
Width	19 mm
Bend	straight
Tube size	5/16"
Overall length	172 mm



## 7/16" HOLE UNIVERSAL

### HFB23

Hole	7/16"
Thickness	1/2"
Width	19 mm
Bend	straight
Tube size	5/16"
Overall length	172 mm



Use universal banjos with the 5/16 tube nut, BQ2578, and the 1/2-20 UNF female fitting, HFIF06.

## 8 MM HOLE 17 MM WIDTH

### HFB112

Hole	8 mm
Thickness	14 mm
Width	17 mm
Bend	35°
Overall length	50 mm



## 10 MM HOLE 16 MM WIDTH

### HFB13

Hole	10 mm
Thickness	5/8"
Width	16 mm
Angle	straight
Overall length	42 mm



### HFB81

Hole	10 mm
Thickness	23 mm
Width	16 mm
Angle	50°
Overall length	46 mm



## 10 MM HOLE 17 MM WIDTH

### HFB17

Hole	10 mm
Thickness	11.5 mm
Width	17 mm
Angle	35°
Overall length	78 mm



### HFB21

Hole	10 mm
Thickness	11.5 mm
Width	17 mm
Bend	50°
Overall length	72 mm



# BLOCK BANJO *CONTINUED*

## HFB46

Hole	10mm
Thickness	11mm
Width	17.6mm
Angle	10°
Overall length	44mm



## HFB100

Hole	10mm
Thickness	8mm
Width	17mm
Bend	straight
Overall length	51mm



## HFB144

Hole	10mm
Thickness	11.5mm
Width	17mm
Angle	straight
Overall length	46mm



## HFB300

Hole	10mm
Thickness	11.4mm
Width	17mm
Angle	15°
Overall length	50mm



## 10 MM HOLE 18 MM WIDTH

## HFB236

Hole	10mm
Thickness	1/2"
Width	18mm
Bend	90°
Overall length	71mm



## HFB367

Hole	10mm
Thickness	11mm
Width	18mm
Bend	90°
Overall length	60mm



## HFB397

Hole	10mm
Thickness	8.5mm
Width	18mm
Bend	60°
Overall length	78mm



## HFB474

Hole	10mm
Thickness	1/2"
Width	18mm
Overall length	67.6mm



| Left pair      HFB475

*right*

## HFB475

Hole	10mm
Thickness	1/2"
Width	18mm
Overall length	67.6mm



| Right pair      HFB474

*left*

# BLOCK BANJO *CONTINUED*

## HFB493

Hole 10mm  
 Thickness 1/2"  
 Width 18mm  
 Bend 90°  
 Overall length 70mm



*left*

Low profile LPB493-10M  
 Right pair HFB494

## HFB494

Hole 10mm  
 Thickness 1/2"  
 Width 18mm  
 Bend 90°  
 Overall length 70mm



*right*

Low profile LPB494-10M  
 Left pair HFB493

## HFB590

Hole 10mm  
 Thickness 13mm  
 Width 18mm  
 Overall length 79.4mm



*left*

Right pair HFB591

## HFB591

Hole 10mm  
 Thickness 13mm  
 Width 18mm  
 Overall length 79.4mm



*right*

Left pair HFB590

## HFB592

Hole 10mm  
 Thickness 13mm  
 Width 18mm  
 Overall length 100.6mm



*left*

Right pair HFB593

## HFB593

Hole 10mm  
 Thickness 13mm  
 Width 18mm  
 Overall length 100.6mm



*right*

Left pair HFB592

## HFB594

Hole 10mm  
 Thickness 13mm  
 Width 18mm  
 Overall length 95.7mm



*left*

Right pair HFB595

## HFB595

Hole 10mm  
 Thickness 13mm  
 Width 18mm  
 Overall length 95.7mm



*right*

Left pair HFB594

## HFB598

Hole 10mm  
 Thickness 1/2"  
 Width 18mm  
 Overall length 82.5mm



*left*

Right pair HFB599

## HFB599

Hole 10mm  
 Thickness 1/2"  
 Width 18mm  
 Overall length 82.5mm



*right*

Left pair HFB598



# BLOCK BANJO CONTINUED

## 10 MM HOLE 19 MM WIDTH

### HFB16

Hole	10 mm
Thickness	10.4 mm
Width	19 mm
Angle	20°
Overall length	54 mm



### HFB40

Hole	10 mm
Thickness	11.3 mm
Width	19 mm
Angle	straight
Overall length	42 mm



### HFB45

Hole	10 mm
Thickness	11 mm
Width	19.6 mm
Angle	10°
Overall length	47 mm



### HFB49

Hole	10 mm
Thickness	11.3 mm
Width	19 mm
Angle	straight
Overall length	44 mm



### HFB113

Hole	10 mm
Thickness	11.8 mm
Width	19 mm
Overall length	130 mm

Left pair      HFB114



*right*

### HFB114

Hole	10 mm
Thickness	11.8 mm
Width	19 mm
Overall length	130 mm

Right pair      HFB113



*left*

### HFB180

Hole	10 mm
Thickness	11 mm
Width	19.5 mm
Bend	30°
Overall length	65 mm



### HFB187

Hole	10 mm
Thickness	8 mm
Width	19 mm
Bend	straight
Overall length	61 mm



### HFB251

Hole	10 mm
Thickness	12.6 mm
Width	19.6 mm
Bend	90°
Overall length	80 mm



### HFB256

Hole	10 mm
Thickness	11.8 mm
Width	19.5 mm
Bend	75°
Overall length	110 mm



# BLOCK BANJO *CONTINUED*

## HFB310

Hole	10mm
Thickness	11.4mm
Width	19mm
Bend	10°
Overall length	82mm



## 10 MM HOLE 20 MM WIDTH

### HFB12

Hole	10mm
Thickness	11.5mm
Width	20mm
Angle	10°
Overall length	46mm



| Low profile      LPB12-10M

### HFB14

Hole	10mm
Thickness	13mm
Width	20mm
Bend	20°
Overall length	55mm



| Low profile      LPB14

### HFB41

Hole	11mm
Thickness	14mm
Width	20mm
Angle	20°
Overall length	50mm



### HFB91

Hole	10mm
Thickness	11.4mm
Width	20mm
Angle	straight
Overall length	42mm



### HFB107

Hole	10mm
Thickness	12mm
Width	20mm
Bend	75°
Overall length	86mm



*right*

| Left pair      HFB108

### HFB108

Hole	10mm
Thickness	12mm
Width	20mm
Bend	75°
Overall length	86mm



*left*

| Right pair      HFB107

### HFB119

Hole	10mm
Thickness	11.9mm
Width	20mm
Bend	90°
Overall length	60mm



*right*

| Left pair      HFB120

### HFB120

Hole	10mm
Thickness	11.9mm
Width	20mm
Bend	90°
Overall length	60mm



*left*

| Right pair      HFB119

# BLOCK BANJO CONTINUED

## HFB161

Hole	10 mm
Thickness	14.5 mm
Width	20 mm
Bend	30°
Overall length	121 mm



## HFB259

Hole	10 mm
Thickness	11.6 mm
Width	20.5 mm
Bend	90°
Overall length	110 mm



| Right pair      HFB260

## HFB260

Hole	10 mm
Thickness	11.6 mm
Width	20.5 mm
Bend	90°
Overall length	110 mm



| Left pair      HFB259

## HFB267

Hole	10 mm
Thickness	11.7 mm
Width	20.5 mm
Bend	15°
Overall length	90 mm



## HFB450

Hole	10 mm
Thickness	12.4 mm
Width	20 mm
Bend	90°
Overall length	80 mm



| Left pair      HFB451

## HFB451

Hole	10 mm
Thickness	12.4 mm
Width	20 mm
Bend	90°
Overall length	80 mm



| Right pair      HFB450

## 10 MM HOLE 22 MM WIDTH

## HFB51

Hole	10 mm
Thickness	14.7 mm
Width	22.2 mm
Bend	55°
Overall length	75 mm



# BLOCK BANJO *CONTINUED*

## HFB121

Hole 10mm  
 Thickness 14.7mm  
 Width 22.2mm  
 Overall length 127mm



*right*

Left pair HFB122

## HFB122

Hole 10mm  
 Thickness 14.7mm  
 Width 22.2mm  
 Overall length 127mm



*left*

Right pair HFB121

## HFB173

Hole 10mm  
 Thickness 12mm  
 Width 22.2mm  
 Overall length 118mm



## HFB239

Hole 10mm  
 Thickness 11.6mm  
 Width 22.2mm  
 Overall length 200mm



## HFB240

Hole 10mm  
 Thickness 11.9mm  
 Width 22.2mm  
 Overall length 200mm



## HFB242

Hole 10mm  
 Thickness 11.5mm  
 Width 22.2mm  
 Overall length 220mm



## HFB245

Hole 10mm  
 Thickness 11.7mm  
 Width 22.2mm  
 Overall length 100mm



*right*

Left pair HFB246

## HFB246

Hole 10mm  
 Thickness 11.7mm  
 Width 22.2mm  
 Overall length 100mm



*left*

Right pair HFB245

## HFB247

Hole 10mm  
 Thickness 11.8mm  
 Width 22.2mm  
 Bend 30°  
 Overall length 51.9mm



*left*

Right pair HFB248

## HFB248

Hole 10mm  
 Thickness 11.8mm  
 Width 22.2mm  
 Bend 30°  
 Overall length 51.9mm



*right*

Left pair HFB247

## HFB249

Hole 10mm  
 Thickness 11.8mm  
 Width 22.2mm  
 Overall length 68.3mm



*left*

Right pair HFB250

## HFB250

Hole 10mm  
 Thickness 11.8mm  
 Width 22.2mm  
 Overall length 68.3mm



*right*

Left pair HFB249

# BLOCK BANJO *CONTINUED*

## HFB284

Hole	10mm
Thickness	11.5mm
Width	22.4mm
Overall length	107.4mm

| Right pair      HFB285



## HFB285

Hole	10mm
Thickness	11.5mm
Width	22.4mm
Overall length	107.4mm

| Left pair      HFB284



## HFB286

Hole	10mm
Thickness	11.5mm
Width	22.4mm
Bend	straight
Overall length	62mm



## HFB328

Hole	10mm
Thickness	7/16"
Width	22mm
Overall length	75mm

| Left pair      HFB329



## HFB329

Hole	10mm
Thickness	7/16"
Width	22mm
Overall length	75mm

| Right pair      HFB328



## HFB410

Hole	10mm
Thickness	12mm
Width	22mm
Bend	55°
Overall length	86.6mm

| Right pair      HFB411



## HFB411

Hole	10mm
Thickness	12mm
Width	22mm
Bend	55°
Overall length	86.6mm

| Left pair      HFB410



## 10 MM HOLE 25 MM WIDTH

### HFB597

Hole	10mm
Thickness	11.8mm
Width	25.4mm
Angle	straight
Overall length	46.5mm



# BLOCK BANJO *CONTINUED*

## 10 MM HOLE 26 MM WIDTH

### HFB56

Hole	10mm
Thickness	11.7 mm
Width	26mm
Angle	straight
Overall length	45mm



### HFB403

Hole	10mm
Thickness	11.5 mm
Width	26mm
Angle	straight
Overall length	52mm



## 10 MM HOLE 28 MM WIDTH

### HFB11

Hole	10mm
Thickness	16.5 mm
Width	28mm
Bend	40°
Overall length	92mm



### HFB86

Hole	10mm
Thickness	14.2 mm
Width	28.6 mm
Overall length	175mm



*left*

### HFB87

Hole	10mm
Thickness	14.2 mm
Width	28.6 mm
Overall length	175mm



*right*

| Right pair      HFB87

| Left pair      HFB86

## 11 MM HOLE 19 MM WIDTH

### HFB54

Hole	11mm
Thickness	11 mm
Width	19mm
Angle	straight
Overall length	43mm



### HFB59

Hole	11mm
Thickness	14.8 mm
Width	19.5 mm
Angle	straight
Overall length	52mm



### HFB66

Hole	11mm
Thickness	14.7 mm
Width	19mm
Angle	straight
Overall length	41 mm



### HFB72

Hole	11mm
Thickness	11 mm
Width	19mm
Angle	10°
Overall length	42mm



# BLOCK BANJO CONTINUED

## 11 MM HOLE 20 MM WIDTH

### HFB60

Hole	11 mm
Thickness	11.5 mm
Width	20 mm
Angle	10°
Overall length	46 mm



## 11 MM HOLE 22 MM WIDTH

### HFB61

Hole	11 mm
Thickness	14.6 mm
Width	22.2 mm
Bend	105°
Overall length	60 mm



### HFB78

Hole	11 mm
Thickness	11 mm
Width	22.2 mm
Overall length	133 mm



*left*

| Right pair      HFB79

### HFB79

Hole	11 mm
Thickness	11 mm
Width	22.2 mm
Overall length	133 mm



*right*

| Left pair      HFB78

## 11 MM HOLE 25 MM WIDTH

### HFB48

Hole	11 mm
Thickness	12.5 mm
Width	25.5 mm
Angle	15°
Overall length	49 mm



### HFB55

Hole	11 mm
Thickness	12.4 mm
Width	25 mm
Angle	straight
Overall length	47 mm





# BLOCK BANJO *CONTINUED*

## 12 MM HOLE 19 MM WIDTH

### HFB101

Hole	12mm
Thickness	8mm
Width	19mm
Bend	straight
Overall length	51mm



### HFB145

Hole	12mm
Thickness	8mm
Width	19mm
Bend	straight
Overall length	61mm



### HFB379

Hole	12mm
Thickness	8.5mm
Width	19mm
Bend	30°
Overall length	60mm



## 12 MM HOLE 22 MM WIDTH

### HFB312

Hole	12mm
Thickness	8mm
Width	22mm
Bend	30°
Overall length	57mm



## 3/8" HOLE 19 MM WIDTH

### HFB39

Hole	3/8"
Thickness	1/2"
Width	19mm
Bend	15°
Overall length	100mm



### HFB77

Hole	3/8"
Thickness	1/2"
Width	19.7mm
Overall length	143mm



### HFB90

Hole	3/8"
Thickness	7/16"
Width	19mm
Bend	35°
Overall length	75mm





# BLOCK BANJO CONTINUED

## 3/8" HOLE 20 MM WIDTH

### HFB243

Hole	3/8"
Thickness	14.9mm
Width	20.5mm
Angle	straight
Overall length	42mm



### HFB283

Hole	3/8"
Thickness	14.7mm
Width	20mm
Angle	straight
Overall length	42mm



## 3/8" HOLE 22 MM WIDTH

### HFB58

Hole	3/8"
Thickness	7/16"
Width	22.2mm
Bend	65°
Overall length	80mm



### HFB68

Hole	3/8"
Thickness	1/2"
Width	22.4mm
Bend	7°
Overall length	110mm



*left*

### HFB69

Hole	3/8"
Thickness	1/2"
Width	22.4mm
Bend	7°
Overall length	110mm



*right*

| Right pair      HFB69

| Left pair        HFB68

### HFB135

Hole	3/8"
Thickness	7/16"
Width	22.2mm
Bend	10°
Overall length	114mm



*right*

### HFB136

Hole	3/8"
Thickness	7/16"
Width	22.2mm
Bend	10°
Overall length	114mm



*left*

| Left pair        HFB136

| Right pair       HFB135

### HFB140

Hole	3/8"
Thickness	1/2"
Width	22.2mm
Bend	75°
Overall length	111mm



*left*

### HFB141

Hole	3/8"
Thickness	1/2"
Width	22.2mm
Bend	75°
Overall length	111mm



*right*

| Right pair       HFB141

| Left pair        HFB140

# BLOCK BANJO *CONTINUED*

## HFB230

Hole 3/8"  
 Thickness 7/16"  
 Width 22mm  
 Angle 10°  
 Overall length 45mm



Left pair HFB231

## HFB231

Hole 3/8"  
 Thickness 7/16"  
 Width 22mm  
 Angle 10°  
 Overall length 45mm



Right pair HFB230

## HFB277

Hole 3/8"  
 Thickness 1/2"  
 Width 22.2mm  
 Bend 90°  
 Overall length 73mm



Left pair HFB278

## HFB278

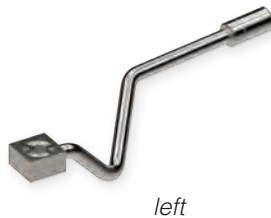
Hole 3/8"  
 Thickness 1/2"  
 Width 22.2mm  
 Bend 90°  
 Overall length 73mm



Right pair HFB277

## HFB315

Hole 3/8"  
 Thickness 1/2"  
 Width 22.2mm  
 Overall length 195mm



Right pair HFB316

## HFB316

Hole 3/8"  
 Thickness 1/2"  
 Width 22.2mm  
 Overall length 195mm



Left pair HFB315

## HFB386

Hole 3/8"  
 Thickness 1/2"  
 Width 22.2mm  
 Overall length 200mm



Right pair HFB387

## HFB387

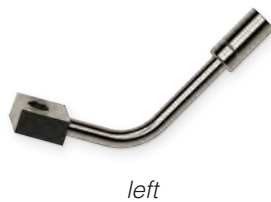
Hole 3/8"  
 Thickness 1/2"  
 Width 22.2mm  
 Overall length 200mm



Left pair HFB386

## HFB418

Hole 3/8"  
 Thickness 7/16"  
 Width 22.2mm  
 Bend 60°  
 Overall length 80mm



Right pair HFB419

## HFB419

Hole 3/8"  
 Thickness 7/16"  
 Width 22.2mm  
 Bend 60°  
 Overall length 80mm



Left pair HFB418

# BLOCK BANJO CONTINUED

## 3/8" HOLE 23 MM WIDTH

### HFB193

Hole	3/8"
Thickness	1/2"
Width	23 mm
Bend	10°
Overall length	110 mm



### HFB209

Hole	3/8"
Thickness	1/2"
Width	23 mm
Overall length	180 mm



Right pair HFB210

### HFB210

Hole	3/8"
Thickness	1/2"
Width	23 mm
Overall length	180 mm



Left pair HFB209

### HFB323

Hole	3/8"
Thickness	1/2"
Width	23.1 mm
Bend	90°
Overall length	63 mm



Right pair HFB324

### HFB324

Hole	3/8"
Thickness	1/2"
Width	23.1 mm
Bend	90°
Overall length	63 mm



Left pair HFB323

### HFB430

Hole	3/8"
Thickness	12.5 mm
Width	23.3 mm
Overall length	143.8 mm



Left pair HFB431

### HFB431

Hole	3/8"
Thickness	12.5 mm
Width	23.3 mm
Overall length	143.8 mm



Right pair HFB430

## 3/8" HOLE 24 MM WIDTH

### HFB322

Hole	3/8"
Thickness	1/2"
Width	24.4 mm
Overall length	105 mm



# BLOCK BANJO *CONTINUED*

## 3/8" HOLE 25 MM WIDTH

### HFB131

Hole 3/8"  
 Thickness 1/4"  
 Width 25 mm  
 Overall length 148 mm



*right*

| Left pair HFB132

### HFB132

Hole 3/8"  
 Thickness 1/4"  
 Width 25 mm  
 Overall length 148 mm



*left*

| Right pair HFB131

### HFB148

Hole 3/8"  
 Thickness 1/2"  
 Width 25.4 mm  
 Bend 85°  
 Overall length 120.7 mm



### HFB155

Hole 3/8"  
 Thickness 1/2"  
 Width 25 mm  
 Bend 70°  
 Overall length 190 mm



*right*

| Left pair HFB156

### HFB156

Hole 3/8"  
 Thickness 1/2"  
 Width 25 mm  
 Bend 70°  
 Overall length 190 mm



*left*

| Right pair HFB155

### HFB203

Hole 3/8"  
 Thickness 11 mm  
 Width 25 mm  
 Bend 35°  
 Overall length 75 mm



### HFB221

Hole 3/8"  
 Thickness 1/2"  
 Width 25.5 mm  
 Bend 90°  
 Overall length 180 mm



*left*

| Right pair HFB222

### HFB222

Hole 3/8"  
 Thickness 1/2"  
 Width 25.5 mm  
 Bend 90°  
 Overall length 180 mm



*right*

| Left pair HFB221

# BLOCK BANJO *CONTINUED*

## HFB270

Hole	3/8"
Thickness	1/2"
Width	25.4 mm
Overall length	60.3 mm



## HFB380

Hole	3/8"
Thickness	7/16"
Width	25.4 mm
Bend	60°
Overall length	165 mm



| Right pair      HFB381

## HFB381

Hole	3/8"
Thickness	7/16"
Width	25.4 mm
Bend	60°
Overall length	165 mm



| Left pair      HFB380

## HFB384

Hole	3/8"
Thickness	12.5 mm
Width	25.4 mm
Angle	straight
Overall length	45 mm



## HFB623

Hole	3/8"
Thickness	1/2"
Width	25.4 mm
Overall length	162 mm



| Left pair      HFB624

## HFB624

Hole	3/8"
Thickness	1/2"
Width	25.4 mm
Overall length	162 mm



| Right pair      HFB623

## 3/8" HOLE 26 MM WIDTH

## HFB306

Hole	3/8"
Thickness	15.3 mm
Width	26 mm
Overall length	134 mm



| Left pair      HFB307

## HFB307

Hole	3/8"
Thickness	15.3 mm
Width	26 mm
Overall length	134 mm



| Right pair      HFB306

# BLOCK BANJO *CONTINUED*

---

## 3/8" HOLE 28 MM WIDTH

### HFB67

Hole	3/8"
Thickness	1/2"
Width	28 mm
Angle	straight
Overall length	48 mm



---

## 7/16" HOLE 22 MM WIDTH

### HFB276

Hole	7/16"
Thickness	14.7 mm
Width	22.2 mm
Bend	90°
Overall length	65 mm



---

## 7/16" HOLE 32 MM WIDTH

### HFB165

Hole	7/16"
Thickness	14.7 mm
Width	32.5 mm
Angle	20°
Overall length	65 mm



| Right pair      HFB166

### HFB166

Hole	7/16"
Thickness	14.7 mm
Width	32.5 mm
Angle	20°
Overall length	65 mm



| Left pair      HFB165

# ROUND BANJO

## 8 MM HOLE 14 MM WIDTH

### HFB27

Hole	8 mm
Thickness	6 mm
Width	14 mm
Bend	straight
Overall length	53 mm



*bendable to 45°*

Low profile      LPB27-8M

## 8 MM HOLE 21 MM WIDTH

### HFB111

Hole	8 mm
Thickness	13.5 mm
Width	21 mm
Angle	straight
Overall length	40 mm



## 10 MM HOLE 17 MM WIDTH

### HFB01

Hole	10 mm
Thickness	8 mm
Width	17 mm
Bend	straight
Overall length	54 mm



*bendable to 45°*

Low profile      LPB01-10M  
LP chrome      LPB01-10MC  
LP stainless      LPB01-10MSS

### HFB03

Hole	10 mm
Thickness	8 mm
Width	17 mm
Bend	straight
Overall length	66 mm



*bendable to 45°*

### HFB05

Hole	10 mm
Thickness	10 mm
Width	17 mm
Bend	straight
Overall length	65 mm



*bendable to 45°*

### HFB29

Hole	10 mm
Thickness	10 mm
Width	17 mm
Bend	40°
Overall length	52 mm



### HFB32

Hole	10 mm
Thickness	8 mm
Width	17 mm
Bend	90°
Overall length	39 mm



Low profile      LPB01-90-10M

### HFB33

Hole	10 mm
Thickness	8 mm
Width	17 mm
Bend	75°
Overall length	60 mm



# ROUND BANJO *CONTINUED*

## HFB34

Hole 10mm  
 Thickness 8mm  
 Width 17mm  
 Bend straight  
 Overall length 62.5mm



*bendable to 90°*

Stainless HFB34SS

## HFB35

Hole 10mm  
 Thickness 10mm  
 Width 17mm  
 Bend straight  
 Overall length 80mm



*bendable to 90°*

## HFB50

Hole 10mm  
 Thickness 10mm  
 Width 17mm  
 Bend straight  
 Overall length 50mm



*left  
 bendable to 45°*

Right pair HFB73

## HFB73

Hole 10mm  
 Thickness 10mm  
 Width 17mm  
 Bend straight  
 Overall length 50mm



*right  
 bendable to 45°*

Left pair HFB50

## HFB75

Hole 10mm  
 Thickness 10mm  
 Width 17mm  
 Bend 90°  
 Overall length 61mm



## HFB288

Hole 10mm  
 Thickness 8mm  
 Width 17mm  
 Bend straight  
 Overall length 61mm



*bendable to 45°*

## HFB342

Hole 10mm  
 Thickness 8mm  
 Width 17mm  
 Bend 15°  
 Overall length 60mm



*right*

Left pair HFB343

## HFB343

Hole 10mm  
 Thickness 8mm  
 Width 17mm  
 Bend 15°  
 Overall length 60mm



*left*

Right pair HFB342

## HFB344

Hole 10mm  
 Thickness 10mm  
 Width 17mm  
 Bend straight  
 Overall length 58mm



*bendable to 45°*



# ROUND BANJO *CONTINUED*

## HFB358

Hole 10mm  
 Thickness 8mm  
 Width 17mm  
 Bend 75°  
 Overall length 45mm



| Right pair HFB359

## HFB359

Hole 10mm  
 Thickness 8mm  
 Width 17mm  
 Bend 75°  
 Overall length 45mm



| Left pair HFB358

## HFB366

Hole 10mm  
 Thickness 8mm  
 Width 17mm  
 Bend 20°  
 Overall length 47.8mm



## HFB530

Hole 10mm  
 Thickness 10mm  
 Width 17mm  
 Bend 15°  
 Overall length 82mm



## HFB544

Hole 10mm  
 Thickness 10mm  
 Width 17mm  
 Overall length 89mm



## HFB545

Hole 10mm  
 Thickness 10mm  
 Width 17mm  
 Overall length 108mm



| Right pair HFB546

## HFB546

Hole 10mm  
 Thickness 10mm  
 Width 17mm  
 Overall length 108mm



| Left pair HFB545

# ROUND BANJO *CONTINUED*

## HFB547

Hole 10mm  
 Thickness 10mm  
 Width 17mm  
 Overall length 102mm



*left*

| Right pair HFB548

## HFB548

Hole 10mm  
 Thickness 10mm  
 Width 17mm  
 Overall length 102mm



*right*

| Left pair HFB547

## HFB551

Hole 10mm  
 Thickness 10mm  
 Width 17mm  
 Bend 45°  
 Overall length 82mm



*left*

| Right pair HFB552

## HFB552

Hole 10mm  
 Thickness 10mm  
 Width 17mm  
 Bend 45°  
 Overall length 82mm



*right*

| Left pair HFB551

## HFB553

Hole 10mm  
 Thickness 10mm  
 Width 17mm  
 Bend 90°  
 Overall length 47mm



*left*

| Right pair HFB554

## HFB554

Hole 10mm  
 Thickness 10mm  
 Width 17mm  
 Bend 90°  
 Overall length 47mm



*right*

| Left pair HFB553

## HFB555

Hole 10mm  
 Thickness 10mm  
 Width 17mm  
 Bend 85°  
 Overall length 59mm



*left*

| Right pair HFB556

## HFB556

Hole 10mm  
 Thickness 10mm  
 Width 17mm  
 Bend 85°  
 Overall length 59mm



*right*

| Left pair HFB555

## HFB557

Hole 10mm  
 Thickness 10mm  
 Width 17mm  
 Bend straight  
 Overall length 75mm



*bendable to 45°*

# ROUND BANJO *CONTINUED*

## HFB558

Hole 10 mm  
 Thickness 10 mm  
 Width 17 mm  
 Bend 90°  
 Overall length 50 mm



*left*

| Right pair HFB559

## HFB559

Hole 10 mm  
 Thickness 10 mm  
 Width 17 mm  
 Bend 90°  
 Overall length 50 mm



*right*

| Left pair HFB558

## HFB562

Hole 10 mm  
 Thickness 10 mm  
 Width 17 mm  
 Bend 45°  
 Overall length 66.8 mm



*left*

| Right pair HFB563

## HFB563

Hole 10 mm  
 Thickness 10 mm  
 Width 17 mm  
 Bend 45°  
 Overall length 66.8 mm



*right*

| Left pair HFB562

## HFB567

Hole 10 mm  
 Thickness 10 mm  
 Width 17 mm  
 Bend 20°  
 Overall length 66.6 mm



*left*

| Right pair HFB568

## HFB568

Hole 10 mm  
 Thickness 10 mm  
 Width 17 mm  
 Bend 20°  
 Overall length 66.6 mm



*right*

| Left pair HFB567

## HFB569

Hole 10 mm  
 Thickness 10 mm  
 Width 17 mm  
 Overall length 48.8 mm



*left*

| Right pair HFB570

## HFB570

Hole 10 mm  
 Thickness 10 mm  
 Width 17 mm  
 Overall length 48.8 mm



*right*

| Left pair HFB569

# ROUND BANJO *CONTINUED*

## 10 MM HOLE 18 MM WIDTH

### HFB02

Hole 10mm  
 Thickness 10mm  
 Width 18mm  
 Bend straight  
 Overall length 64mm



*bendable to 45°*

### HFB09

Hole 10mm  
 Thickness 10mm  
 Width 18mm  
 Bend straight  
 Overall length 55mm



*bendable to 45°*

Stainless HFB09SS  
 Low profile LPB09-10M  
 LP chrome LPB09-10MC  
 LP stainless LPB09-10MSS

### HFB15

Hole 10mm  
 Thickness 10mm  
 Width 18mm  
 Bend straight  
 Overall length 52mm



*bendable to 45°*

### HFB28

Hole 10mm  
 Thickness 10mm  
 Width 18mm  
 Bend straight  
 Overall length 54mm



*bendable to 45°*

### HFB37

Hole 10mm  
 Thickness 10mm  
 Width 18mm  
 Bend straight  
 Overall length 64mm



*bendable to 90°*

Stainless HFB37SS

### HFB92

Hole 10mm  
 Thickness 10mm  
 Width 18mm  
 Overall length 90mm



*left*

Right pair HFB93

### HFB93

Hole 10mm  
 Thickness 10mm  
 Width 18mm  
 Overall length 90mm



*right*

Left pair HFB92

# ROUND BANJO *CONTINUED*

## HFB194

Hole	10mm
Thickness	10mm
Width	18mm
Bend	straight
Overall length	92mm



| Low profile      LPB455-10M

## HFB340

Hole	10mm
Thickness	10mm
Width	18mm
Bend	45°
Overall length	100mm



## HFB345

Hole	10mm
Thickness	10mm
Width	18mm
Bend	50°
Overall length	45mm



## HFB348

Hole	10mm
Thickness	15mm
Width	18mm
Bend	30°
Overall length	50mm



*left*

| Right pair      HFB349

## HFB349

Hole	10mm
Thickness	15mm
Width	18mm
Bend	30°
Overall length	50mm



*right*

| Left pair      HFB348

## HFB351

Hole	10mm
Thickness	10mm
Width	18mm
Bend	straight
Overall length	55mm



*left*

*bendable to 45°*

| Right pair      HFB352

## HFB352

Hole	10mm
Thickness	10mm
Width	18mm
Bend	straight
Overall length	55mm



*right*

*bendable to 45°*

| Left pair      HFB351

## HFB353

Hole	10mm
Thickness	8mm
Width	18mm
Bend	75°
Overall length	60mm



*right*

| Left pair      HFB354

## HFB354

Hole	10mm
Thickness	8mm
Width	18mm
Bend	75°
Overall length	60mm



*left*

| Right pair      HFB353

# ROUND BANJO *CONTINUED*

## HFB357

Hole 10mm  
 Thickness 8mm  
 Width 18mm  
 Bend 40°  
 Overall length 60mm



## HFB362

Hole 10mm  
 Thickness 8mm  
 Width 18mm  
 Bend 80°  
 Overall length 45mm



*left*

## HFB363

Hole 10mm  
 Thickness 8mm  
 Width 18mm  
 Bend 80°  
 Overall length 45mm



*right*

| Right pair HFB363

| Left pair HFB362

## HFB364

Hole 10mm  
 Thickness 8mm  
 Width 18mm  
 Bend 75°  
 Overall length 50mm



## HFB373

Hole 10mm  
 Thickness 10mm  
 Width 18mm  
 Bend 55°  
 Overall length 65mm



## HFB375

Hole 10mm  
 Thickness 10mm  
 Width 18mm  
 Bend straight  
 Overall length 65mm



*bendable to 45°*

## HFB456

Hole 10mm  
 Thickness 10mm  
 Width 18mm  
 Bend 90°  
 Overall length 48mm



*right*

## HFB457

Hole 10mm  
 Thickness 10mm  
 Width 18mm  
 Bend 90°  
 Overall length 48mm



*left*

| Left pair HFB457

| Right pair HFB456

# ROUND BANJO *CONTINUED*

## HFB519

Hole	10mm
Thickness	10mm
Width	18mm
Bend	15°
Overall length	60mm



## HFB523

Hole	10mm
Thickness	10mm
Width	18mm
Bend	straight
Overall length	60mm



*bendable to 45°*

## HFB527

Hole	10mm
Thickness	10mm
Width	18mm
Bend	straight
Overall length	60mm



*bendable to 45°*

## HFB528

Hole	10mm
Thickness	10mm
Width	18mm
Bend	straight
Overall length	55mm



## HFB534

Hole	10mm
Thickness	10mm
Width	18mm
Bend	75°
Overall length	60mm



## HFB535

Hole	10mm
Thickness	10mm
Width	18mm
Bend	30°
Overall length	60mm



*left*

| Right pair      HFB536

## HFB536

Hole	10mm
Thickness	10mm
Width	18mm
Bend	30°
Overall length	60mm



*right*

| Left pair      HFB535

## HFB537

Hole	10mm
Thickness	10mm
Width	18mm
Bend	45°
Overall length	60mm



*left*

| Right pair      HFB538

## HFB538

Hole	10mm
Thickness	10mm
Width	18mm
Bend	45°
Overall length	60mm



*right*

| Left pair      HFB537



# ROUND BANJO *CONTINUED*

## HFB539

Hole 10mm  
 Thickness 10mm  
 Width 18mm  
 Bend 40°  
 Overall length 40mm



| Right pair HFB540

## HFB540

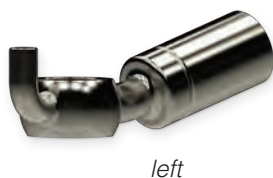
Hole 10mm  
 Thickness 10mm  
 Width 18mm  
 Bend 40°  
 Overall length 40mm



| Left pair HFB539

## HFB541

Hole 10mm  
 Thickness 10mm  
 Width 18mm  
 Bend 25°  
 Overall length 64mm



| Right pair HFB542

## HFB542

Hole 10mm  
 Thickness 10mm  
 Width 18mm  
 Bend 25°  
 Overall length 64mm



| Left pair HFB541

## HFB573

Hole 10mm  
 Thickness 10mm  
 Width 18mm  
 Bend 30°  
 Overall length 49.1mm



| Right pair HFB574

## HFB574

Hole 10mm  
 Thickness 10mm  
 Width 18mm  
 Bend 30°  
 Overall length 49.1mm



| Left pair HFB573

## 10 MM HOLE 19 MM WIDTH

### HFB10

Hole 10mm  
 Thickness 9.5mm  
 Width 19mm  
 Bend 70°  
 Overall length 68.3mm



## 10 MM HOLE 20 MM WIDTH

### HFB533

Hole 10mm  
 Thickness 14mm  
 Width 20mm  
 Angle straight  
 Overall length 50mm





# ROUND BANJO *CONTINUED*

## 11 MM HOLE 19MM WIDTH

### HFB150

Hole	11 mm
Thickness	8.5 mm
Width	19 mm
Overall length	192 mm



## 11 MM HOLE 25 MM WIDTH

### HFB158

Hole	11 mm
Thickness	14.9 mm
Width	25.4 mm
Bend	35°
Overall length	57 mm



*left*

| Right pair      HFB159

### HFB159

Hole	11 mm
Thickness	14.9 mm
Width	25.4 mm
Bend	35°
Overall length	57 mm



*right*

| Left pair      HFB158

## 12 MM HOLE 19MM WIDTH

### HFB47

Hole	12 mm
Thickness	10 mm
Width	19 mm
Bend	straight
Overall length	55 mm



*bendable to 45°*

| Stainless      HFB47SS  
| Low profile      LPB47-12M

## 15 MM HOLE 25 MM WIDTH

### HFB19

Hole	15 mm
Thickness	13.5 mm
Width	25 mm
Angle	straight
Overall length	45 mm



# ROUND BANJO *CONTINUED*

## 3/8" HOLE 21 MM WIDTH

### HFB105

Hole 3/8"  
 Thickness 1/2"  
 Width 21 mm  
 Overall length 113 mm



*left*

| Right pair HFB106

### HFB106

Hole 3/8"  
 Thickness 1/2"  
 Width 21 mm  
 Overall length 113 mm



*right*

| Left pair HFB105

## 7/16" HOLE 19 MM WIDTH

### HFB448

Hole 7/16"  
 Thickness 10 mm  
 Width 19 mm  
 Bend straight  
 Overall length 60 mm



*bendable to 90°*

| Low profile LPB448-7  
 | LP stainless LPB448-7SS

### HFB679

Hole 7/16"  
 Thickness 10 mm  
 Width 19 mm  
 Bend 45°  
 Overall length 64 mm



### HFB681

Hole 7/16"  
 Thickness 10 mm  
 Width 19 mm  
 Bend 90°  
 Overall length 50.9 mm



| Low profile LPB448-90-7

### HFB682

Hole 7/16"  
 Thickness 10 mm  
 Width 19 mm  
 Bend 35°  
 Overall length 46.1 mm



*side bend*

| Low profile LPB652

# IMPERIAL FEMALE

## BOLT MOUNT 3/8-24 UNF

 *Inverted seat*

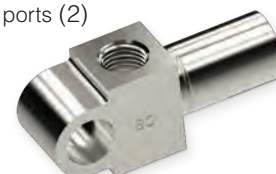
### HFIF23

Thread 3/8-24 UNF ports (2)  
Seat type inverted  
Mount hole 11.9mm  
Overall length 65mm



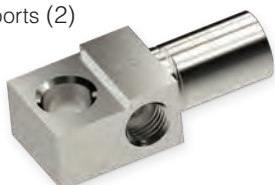
### HFIF25

Thread 3/8-24 UNF ports (2)  
Seat type inverted  
Mount hole 10mm  
Overall length 49mm



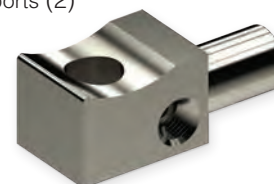
### HFIF34

Thread 3/8-24 UNF ports (2)  
Seat type inverted  
Mount hole 8-10mm  
Overall length 49mm



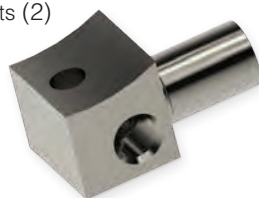
### HFIF37

Thread 3/8-24 UNF ports (2)  
Seat type inverted  
Mount hole 12mm  
Overall length 53mm



### HFIF43

Thread 3/8-24 UNF ports (2)  
Seat type inverted  
Mount hole 7.3mm  
Overall length 22mm



### HFIF47

Thread 3/8-24 UNF ports (2)  
Seat type inverted  
Mount hole 12mm  
Overall length 50mm



### HFIF53

Thread 3/8-24 UNF ports (2)  
Seat type inverted  
Mount hole 11.8mm  
Overall length 53mm



### HFIF55

Thread 3/8-24 UNF ports (2)  
Seat type inverted  
Mount hole 15mm  
Overall length 58mm



### HFIF56

Thread 3/8-24 UNF ports (2)  
Seat type inverted  
Mount hole 11.8mm  
Overall length 55mm



### HFIF66

Thread 3/8-24 UNF ports (2)  
Seat type inverted  
Mount hole 11.9mm  
Bend 30°  
Overall length 93mm

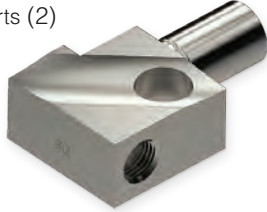


# IMPERIAL FEMALE CONTINUED

## *Inverted seat*

### HFIF80

Thread 3/8-24 UNF ports (2)  
 Seat type inverted  
 Mount hole 11.8mm  
 Overall length 52mm



### HFIF88

Thread 3/8-24 UNF port  
 Seat type inverted  
 Mount hole 11.6mm  
 Overall length 51mm



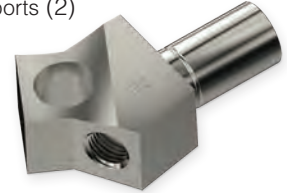
### HFIF94

Thread 3/8-24 UNF ports (2)  
 Seat type inverted  
 Mount hole 8-10mm  
 Overall length 58mm



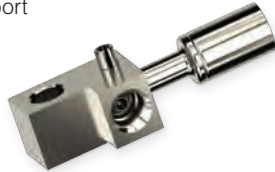
### HFIF110

Thread 3/8-24 UNF ports (2)  
 Seat type inverted  
 Mount hole 12mm  
 Overall length 54mm



### HFIF129

Thread 3/8-24 UNF port  
 Seat type inverted  
 Mount hole 8.75mm  
 Bend straight  
 Overall length 75mm



### HFIF180

Thread 3/8-24 UNF ports (2)  
 Seat type inverted  
 Mount hole 11.9mm  
 Overall length 56mm



## BOLT MOUNT 3/8-24 UNF + 7/16-24 UNS

## *Inverted seat*

### HFIF28

Threads 3/8-24 UNF port  
 7/16-24 UNS port  
 Seat type inverted  
 Mount hole 11.8mm  
 Overall length 52mm



### HFIF31

Threads 3/8-24 UNF port  
 7/16-24 UNS port  
 Seat type inverted  
 Mount hole 11.9mm  
 Overall length 52mm



### HFIF39

Thread 3/8-24 UNF port  
 7/16-24 UNS port  
 Seat type inverted  
 Mount hole 11.8mm  
 Overall length 52mm



### HFIF48

Threads 3/8-24 UNF port  
 7/16-24 UNS port  
 Seat type inverted  
 Mount hole 11.5mm  
 Overall length 53mm



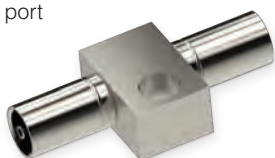
# IMPERIAL FEMALE CONTINUED

## BOLT MOUNT 7/16-24 UNS

 *Inverted seat*

### HFIF46

Thread 7/16-24 UNS port  
 Seat type inverted  
 Mount hole 10mm  
 Overall length 60mm



### HFIF54

Thread 7/16-24 UNS port  
 Seat type inverted  
 Mount hole 11.9mm  
 Angle 90°  
 Overall length 51mm



### HFIF57

Thread 7/16-24 UNS ports (2)  
 Seat type inverted  
 Mount hole 8-10mm  
 Overall length 54mm



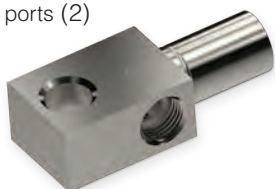
### HFIF111

Thread 7/16-24 UNS ports (2)  
 Seat type inverted  
 Mount hole 12mm  
 Overall length 51mm



### HFIF157

Thread 7/16-24 UNS ports (2)  
 Seat type inverted  
 Mount hole 10mm  
 Overall length 53mm



## BOLT MOUNT 1/2-20 UNF

 *Inverted seat*

### HFIF77

Thread 1/2-20 UNF port  
 Seat type inverted  
 Mount hole 6mm  
 Overall length 42mm



# IMPERIAL FEMALE CONTINUED

## BRACKET MOUNT 3/8-24 UNF

 *Inverted seat*

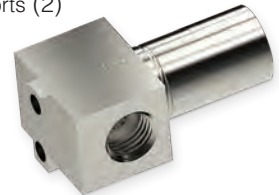
### HFIF15

Thread 3/8-24 UNF port  
Seat type inverted  
Overall length 46 mm



### HFIF22

Thread 3/8-24 UNF ports (2)  
Seat type inverted  
Overall length 41 mm



### HFIF60A

Thread 3/8-24 UNF ports (2)  
Seat type inverted  
Overall length 42 mm



### HFIF70

Thread 3/8-24 UNF ports (2)  
Seat type inverted  
Overall length 48 mm



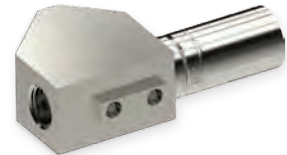
### HFIF90

Thread 3/8-24 UNF ports (2)  
Seat type inverted  
Overall length 37 mm



### HFIF99

Thread 3/8-24 UNF ports (2)  
Seat type inverted  
Overall length 56 mm



### HFIF120

Thread 3/8-24 UNF port  
Seat type inverted  
Hex 5/8"  
Overall length 42 mm



### HFIF146

Thread 3/8-24 UNF port  
Seat type inverted  
Bend 20°  
Overall length 140 mm



*Use with wire brackets (such as BQB415).*

### HFIF147

Thread 3/8-24 UNF port  
Seat type inverted  
Bend 20°  
Overall length 20 mm



### HFIF148

Thread 3/8-24 UNF port  
Seat type inverted  
Overall length 52.5 mm



# IMPERIAL FEMALE CONTINUED

 *Inverted seat*

## HFIF149

Thread 3/8-24 UNF port  
Seat type inverted  
Overall length 52.5 mm



## HFIF152

Thread 3/8-24 UNF ports (2)  
Seat type inverted  
Overall length 47 mm



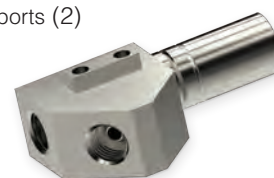
## HFIF153

Thread 3/8-24 UNF ports (2)  
Seat type inverted  
Overall length 57 mm



## HFIF304

Thread 3/8-24 UNF ports (2)  
Seat type inverted  
Overall length 51 mm



# BACKET MOUNT 7/16-24 UNS

 *Inverted seat*

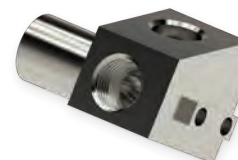
## HFIF52

Thread 7/16-24 UNS port  
Seat type inverted  
Overall length 46 mm



## HFIF109

Thread 7/16-24 UNS ports (2)  
Seat type inverted  
Overall length 46 mm



## HFIF138

Thread 7/16-24 UNS ports (2)  
Seat type inverted  
Overall length 53 mm



/// Find [Bracket Retaining Screws, BQ71](#), on page 19.



# IMPERIAL FEMALE CONTINUED

## BULKHEAD MOUNT 1/8-27 NPT

### HFIFX20

Thread	1/8-27 NPT port
Mount thread	5/8-18 UNF
Hex	19mm
Overall length	45mm



## BULKHEAD MOUNT 3/8-20 BSF

### HFIFX03

Thread	3/8-20 BSF port
Seat type	inverted
Mount thread	5/8-18 UNF
Hex	19mm
Overall length	45mm



## BULKHEAD MOUNT 3/8-24 UNF



### HFIFX05

Thread	3/8-24 UNF port
Seat type	drill-point
Mount thread	5/8-18 UNF
Hex	19mm
Overall length	45mm



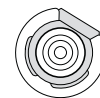
### HFIFX02

Thread	3/8-24 UNF port
Seat type	inverted
Mount thread	5/8-18 UNF
Hex	19mm
Overall length	45mm



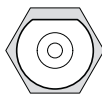
### HFIFX11

Thread	3/8-24 UNF port
Seat type	inverted
Mount thread	5/8-18 UNF
Hex	19mm
Overall length	48mm



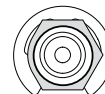
### HFIFX14

Thread	3/8-24 UNF port
Seat type	inverted
Mount thread	3/4-16 UNF
Hex	7/8"
Overall length	45mm



### HFIFX15

Thread	3/8-24 UNF port
Seat type	inverted
Mount thread	5/8-18 UNF
Flats	16mm
Overall length	47mm



/// Bulkhead nuts are on page 148.



# IMPERIAL FEMALE CONTINUED

## BULKHEAD MOUNT 7/16-20 UNF

 *Inverted seat*

### HFIFX04

Thread	7/16-20 UNF port
Seat type	inverted
Mount thread	5/8-18 UNF
Hex	19mm
Overall length	45mm



## BULKHEAD MOUNT 7/16-24 UNS

 *Inverted seat*

### HFIFX01

Thread	7/16-24 UNS port
Seat type	inverted
Mount thread	5/8-18 UNF
Hex	19mm
Overall length	45mm



Low profile  
\*LP stem

LPIFX01 \*  
LPS-LI-SAE

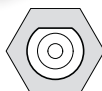
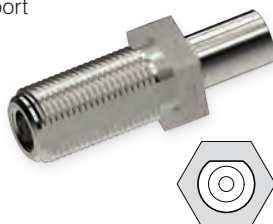
### HFIFX06

Thread	7/16-24 UNS port
Seat type	inverted
Mount thread	5/8-18 UNF
Hex	16mm
Overall length	46mm



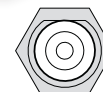
### HFIFX07

Thread	7/16-24 UNS port
Seat type	inverted
Mount thread	3/4-16 UNF
Hex	1"
Overall length	65mm



### HFIFX12

Thread	7/16-24 UNS port
Seat type	inverted
Mount thread	5/8-18 UNF
Hex	7/8"
Overall length	54mm



### HFIFX16

Thread	7/16-24 UNS port
Seat type	inverted
Mount thread	3/4-16 UNF
Hex	7/8"
Overall length	45mm



### HFIFX19

Thread	7/16-24 UNS port
Seat type	inverted
Mount thread	7/8-14 UNF
Hex	1"
Overall length	61mm

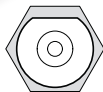
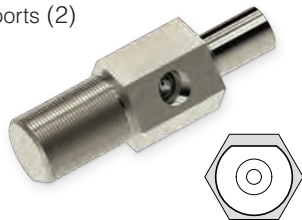


# IMPERIAL FEMALE CONTINUED

 *Inverted seat*

## HFIFX21

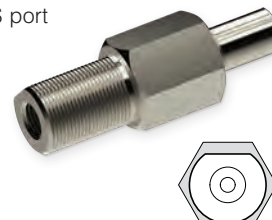
Thread	7/16-24 UNS ports (2)
Seat type	inverted
Mount thread	7/8-18 UNS
Hex	1"
Overall length	80 mm



Secure with BQ89 nut.

## HFIFX22

Thread	7/16-24 UNS port
Seat type	inverted
Mount thread	7/8-14 UNF
Hex	1"
Overall length	80 mm



## HFIFX23

Thread	7/16-24 UNS port
Seat type	inverted
Mount thread	5/8-18 UNF
Hex	5/8"
Overall length	46 mm



# BULKHEAD MOUNT 1/2-20 UNF

 *Inverted seat*

## HFIFX09

Thread	1/2-20 UNF port
Seat type	inverted
Mount thread	11/16-18 UNF
Hex	7/8"
Overall length	46 mm



/// Bulkhead nuts are on page 148.

Not all clip-mount fittings come with an e-clip. The fitting will be pictured with a clip if the clip is included.

# CLIP MOUNT 3/8-24 UNF

 *Drill-point seat*

## HFIF21

Thread	3/8-24 UNF port
Seat type	drill-point
Flats	16 mm
Overall length	37 mm



# IMPERIAL FEMALE CONTINUED

## *Inverted seat*

### HFIF01

Thread	3/8-24 UNF port
Seat type	inverted
Hex	19 mm
Overall length	38 mm



Brass	HFIF01B
Stainless	HFIF01SS
Low profile	LPIF01, LPIF01-6*
LP chrome	LPIF01-6C*
LP stainless	LPIF01-6SS*
*LP stem	LPS-SI-SAE
Alternative	HFIF36

### HFIF01B

Thread	3/8-24 UNF port
Seat type	inverted
Hex	17 mm
Overall length	38 mm



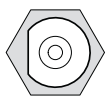
*brass*

### HFIF05

Thread	3/8-24 UNF port
Seat type	inverted
Hex	19 mm
Overall length	38 mm

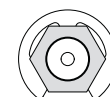


Low profile	LPIF05*
*LP stem	LPS-SI-SAE
Alternative	HFIF45



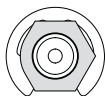
### HFIF07

Thread	3/8-24 UNF port
Seat type	inverted
Hex	16 mm
Overall length	41 mm



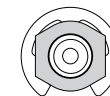
### HFIF08

Thread	3/8-24 UNF port
Seat type	inverted
Flats	16 mm
Overall length	41 mm



### HFIF10

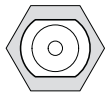
Thread	3/8-24 UNF port
Seat type	inverted
Flats	16 mm
Overall length	39 mm



Low Profile	LPIF10
*LP stem	LPS-LI-SAE

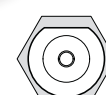
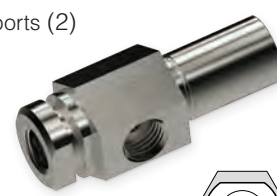
### HFIF11

Thread	3/8-24 UNF port
Seat type	inverted
Hex	19 mm
Overall length	38 mm



### HFIF14

Thread	3/8-24 UNF ports (2)
Seat type	inverted
Hex	19 mm
Overall length	50 mm



///*E-clips, BQ12, are on page 19.  
Retaining clips are on page 150.*

# IMPERIAL FEMALE CONTINUED

 *Inverted seat*

## HFIF18

Thread 3/8-24 UNF port  
 Seat type inverted  
 Overall length 41 mm



## HFIF19

Thread 3/8-24 UNF port  
 Seat type inverted  
 Flats 16 mm  
 Overall length 38 mm



## HFIF26

Thread 3/8-24 UNF port  
 Seat type inverted  
 Hex 5/8"  
 Overall length 40 mm



## HFIF32

Thread 3/8-24 UNF port  
 Seat type inverted  
 Hex 17 mm  
 Overall length 41 mm



## HFIF36

Thread 3/8-24 UNF port  
 Seat type inverted  
 Hex 16 mm  
 Overall length 39 mm



Stainless HFIF36SS  
 Alternative HFIF01

## HFIF38

Thread 3/8-24 UNF port  
 Seat type inverted  
 Hex 11/16"  
 Overall length 40 mm



## HFIF40

Thread 3/8-24 UNF ports (2)  
 Seat type inverted  
 Flats 16 mm  
 Overall length 48 mm



## HFIF45

Thread 3/8-24 UNF port  
 Seat type inverted  
 Hex 16 mm  
 Overall length 39 mm



Alternative HFIF05

## HFIF71

Thread 3/8-24 UNF port  
 Seat type inverted  
 Hex 5/8"  
 Overall length 45 mm



## HFIF72

Thread 3/8-24 UNF port  
 Seat type inverted  
 Hex 17 mm  
 Overall length 47 mm

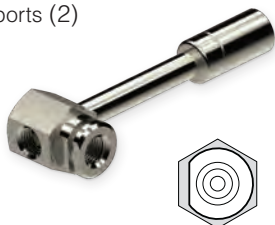


# IMPERIAL FEMALE CONTINUED

## *Inverted seat*

### HFIF74

Thread 3/8-24 UNF ports (2)  
 Seat type inverted  
 Hex 19 mm  
 Overall length 92 mm



### HFIF83

Thread 3/8-24 UNF port  
 Seat type inverted  
 Hex 17 mm  
 Bend 90°  
 Overall length 55 mm



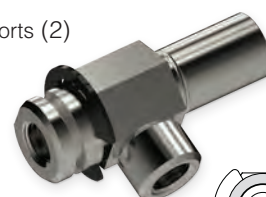
### HFIF85

Thread 3/8-24 UNF port  
 Seat type inverted  
 Hex 11/16"  
 Bend 70°  
 Overall length 117.7 mm



### HFIF87

Thread 3/8-24 UNF ports (2)  
 Seat type inverted  
 Hex 11/16"  
 Overall length 50 mm



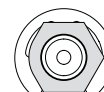
### HFIF103

Thread 3/8-24 UNF port  
 Seat type inverted  
 Bend 60°  
 Overall length 52 mm



### HFIF106

Thread 3/8-24 UNF port  
 Seat type inverted  
 Flats 5/8"  
 Bend 60°  
 Overall length 68 mm



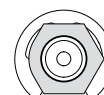
### HFIF140

Thread 3/8-24 UNF port  
 Seat type inverted  
 Hex 17 mm  
 Bend 55°  
 Overall length 64 mm



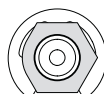
### HFIF143

Thread 3/8-24 UNF port  
 Seat type inverted  
 Flats 5/8"  
 Bend 60°  
 Overall length 68 mm



### HFIF301

Thread 3/8-24 UNF port  
 Seat type inverted  
 Flats 16 mm  
 Overall length 43 mm



### HFIF334B

Thread 3/8-24 UNF port  
 Seat type inverted  
 Hex 16 mm  
 Overall length 41 mm



*brass*

/// E-clips, BQ12, are on page 19.  
 Retaining clips are on page 150.

# IMPERIAL FEMALE CONTINUED

## CLIP MOUNT 7/16-20 UNF

 *Inverted seat*

### HFIF141

Thread 7/16-20 UNF port  
 Seat type inverted  
 Hex 16mm  
 Overall length 46mm



### HFIF172

Thread 7/16-20 UNF port  
 Seat type inverted  
 Hex 7/8"  
 Overall length 38mm



## CLIP MOUNT 7/16-24 UNS

 *Inverted seat*

### HFIF02

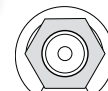
Thread 7/16-24 UNS port  
 Seat type inverted  
 Hex 19mm  
 Overall length 38mm



Low profile LPIF02-7\*  
 \*LP stem LPS-SI-SAE  
 Alternative HFIF24

### HFIF09

Thread 7/16-24 UNS port  
 Seat type inverted  
 Hex 16mm  
 Overall length 45mm



### HFIF20

Thread 7/16-24 UNS port  
 Seat type inverted  
 Flats 16mm  
 Overall length 44mm



### HFIF24

Thread 7/16-24 UNS port  
 Seat type inverted  
 Hex 16mm  
 Overall length 45mm



Alternative HFIF02

### HFIF33

Thread 7/16-24 UNS port  
 Seat type inverted  
 Hex 17mm  
 Overall length 41mm



### HFIF35

Thread 7/16-24 UNS port  
 Seat type inverted  
 Flats 16mm  
 Overall length 46mm





# IMPERIAL FEMALE CONTINUED

 *Inverted seat*

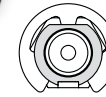
## HFIF51

Thread 7/16-24 UNS port  
Seat type inverted  
Hex 11/16"  
Overall length 46 mm



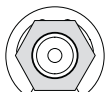
## HFIF73

Thread 7/16-24 UNS port  
Seat type inverted  
Hex 17 mm  
Overall length 47 mm



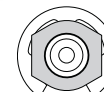
## HFIF116

Thread 7/16-24 UNS port  
Seat type inverted  
Hex 5/8"  
Bend 70°  
Overall length 74.7 mm



## HFIF142

Thread 7/16-24 UNS port  
Seat type inverted  
Flats 16 mm  
Overall length 68 mm



# CLIP MOUNT 1/2-20 UNF

 *Inverted seat*

## HFIF79

Thread 1/2-20 UNF port  
Seat type inverted  
Hex 5/8"  
Overall length 45 mm



/// E-clips, BQ12, are on page 19.  
Retaining clips are on page 150.

# STANDARD 1/2-20 UNF

 *Drill-point seat*

## HFIF03

Thread 1/2-20 UNF port  
Seat type drill-point  
Hex 3/4"  
Overall length 50 mm



 *Inverted seat*

## HFIF06

Thread 1/2-20 UNF port  
Seat type inverted  
Hex 17 mm  
Overall length 38 mm



# METRIC FEMALE

## BOLT MOUNT M10×1

 *Drill-point seat*

### HFMF50

Thread M10×1 ports (2)  
Seat type drill-point  
Mount hole 8-10mm  
Overall length 48mm



### HFMF328

Thread M10×1 port  
Seat type drill-point  
Mount hole 5.5mm  
Mount thread M8×1.25  
Overall length 46mm



 *Inverted seat*

### HFMF18

Thread M10×1 ports (2)  
Seat type inverted  
Mount hole 8.5mm  
Overall length 55mm



### HFMF48

Thread M10×1 port  
Seat type inverted  
Mount hole 8.75mm  
Overall length 53mm



| Low profile LPMF48

### HFMF69

Thread M10×1 port  
Seat type inverted  
Mount hole 6.4mm  
Overall length 62mm

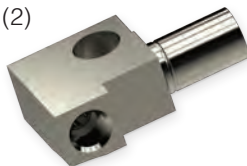


## BOLT MOUNT M11×1.5

 *Inverted seat*

### HFMF79

Thread M11×1.5 ports (2)  
Seat type inverted  
Mount hole 11.9mm  
Overall length 56mm





# METRIC FEMALE CONTINUED

## BRACKET MOUNT M10×1

 *Drill-point seat*

### HFMF40

Thread M10×1 port  
Seat type drill-point  
Overall length 42 mm



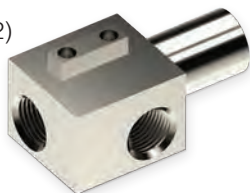
### HFMF70

Thread M10×1 ports (2)  
Seat type drill-point  
Overall length 54 mm



### HFMF90

Thread M10×1 ports (2)  
Seat type drill-point  
Overall length 48 mm



### HFMF364

Thread M10×1 port  
Seat type drill-point  
Flats 17 mm  
Overall length 115 mm



*left*

| Right pair HFMF365

### HFMF365

Thread M10×1 port  
Seat type drill-point  
Flats 17 mm  
Overall length 115 mm



*right*

| Left pair HFMF364

### HFMF371

Thread M10×1 port  
Seat type drill-point  
Mount hole 8.5 mm × 11 mm  
Overall length 35 mm



### HFMF380

Thread M10×1 port  
Seat type drill-point  
Hex 17 mm  
Overall length 148 mm



 *Inverted seat*

### HFMF317

Thread M10×1 port  
Seat type inverted  
Mount hole 4.1 mm × 10 mm  
Overall length 48 mm



### HFMF324

Thread M10×1 port  
Seat type inverted  
Mount hole 8.8 mm (2)  
Hex 19 mm  
Overall length 46 mm



/// Find **Bracket Retaining Screws, BQ71**, on page 19.

# METRIC FEMALE CONTINUED

## Inverted seat

### HFMF325

Thread	M10×1 port
Seat type	inverted
Mount hole	9.1mm
Overall length	45mm



### HFMF326

Thread	M10×1 port
Seat type	inverted
Mount hole	8.3mm
Overall length	34mm



### HFMF342

Thread	M10×1 port
Seat type	inverted
Bend	25°
Overall length	100mm



| Right pair      HFMF343

*left*

### HFMF343

Thread	M10×1 port
Seat type	inverted
Bend	25°
Overall length	100mm



| Left pair      HFMF342

*right*

## BRACKET MOUNT M10×1.5

### Inverted seat

### HFMF396

Thread	M10×1.5 port
Seat type	inverted
Overall length	44mm



Not all clip-mount fittings come with an e-clip. The fitting will be pictured with a clip if the clip is included.

## CLIP MOUNT M9×1

### Inverted seat

### HFMF12

Thread	M9×1 port
Seat type	inverted
Hex	16mm
Overall length	47mm



///  
/// E-clips, BQ12, are on page 19.  
Retaining clips are on page 150.

# METRIC FEMALE CONTINUED

## CLIP MOUNT M10×1

 *Drill-point seat*

### HFMF03

Thread M10×1 port  
Seat type drill-point  
Hex 19 mm  
Overall length 46 mm



### HFMF05

Thread M10×1 port  
Seat type drill-point  
Hex 14 mm  
Overall length 38 mm



Low profile LPMF05-M10X1\*  
LP zinc-nickel LPMF05-M10X1Z\*  
\*LP stem LPS-SD-DIN

### HFMF08

Thread M10×1 port  
Seat type drill-point  
Hex 17 mm  
Overall length 41 mm



Low profile LPMF08-M10X1\*  
\*LP stem LPS-SD-DIN

### HFMF24

Thread M10×1 port  
Seat type drill-point  
Flats 19 mm  
Overall length 38 mm



Low profile LPMF24\*  
\*LP stem LPS-SD-DIN

### HFMF35

Thread M10×1 port  
Seat type drill-point  
Flats 19 mm  
Overall length 37 mm



### HFMF38

Thread M10×1 port  
Seat type drill-point  
Flats 16 mm  
Overall length 37 mm



### HFMF39

Thread M10×1 port  
Seat type drill-point  
Flats 16 mm  
Overall length 39 mm



### HFMF54

Thread M10×1 port  
Seat type drill-point  
Flats 15.5 mm  
Overall length 37 mm



### HFMF55

Thread M10×1 port  
Seat type drill-point  
Hex 19 mm  
Overall length 46 mm



### HFMF58

Thread M10×1 port  
Seat type drill-point  
Hex 17 mm  
Overall length 54 mm



# METRIC FEMALE *CONTINUED*

## Drill-point seat

### HFMF59

Thread M10×1 port  
Seat type drill-point  
Flats 17 mm  
Overall length 38 mm



### HFMF62

Thread M10×1 port  
Seat type drill-point  
Flats 17 mm  
Overall length 39 mm



### HFMF63

Thread M10×1 port  
Seat type drill-point  
Hex 17 mm  
Overall length 39 mm



### HFMF65

Thread M10×1 port  
Seat type drill-point  
Hex 17 mm  
Overall length 39 mm



### HFMF71

Thread M10×1 port  
Seat type drill-point  
Hex 17 mm  
Overall length 39 mm



### HFMF96

Thread M10×1 port  
Seat type drill-point  
Hex 5/8"  
Overall length 38 mm



### HFMF99

Thread M10×1 port  
Seat type drill-point  
Hex 17 mm  
Overall length 45 mm



### HFMF100

Thread M10×1 port  
Seat type drill-point  
Hex 17 mm  
Overall length 39 mm



### HFMF123

Thread M10×1 port  
Seat type drill-point  
Hex 17 mm  
Overall length 39 mm



### HFMF124

Thread M10×1 port  
Seat type drill-point  
Flats 17 mm  
Overall length 45 mm



### HFMF327

Thread M10×1 port  
Seat type drill-point  
Overall length 39 mm



### HFMF329

Thread M10×1 port  
Seat type drill-point  
Flats 17 mm  
Overall length 38 mm



# METRIC FEMALE CONTINUED

## Drill-point seat

### HFMF340

Thread M10×1 port  
Seat type drill-point  
Flats 15 mm  
Overall length 37 mm



### HFMF363

Thread M10×1 port  
Seat type drill-point  
Flats 17 mm  
Overall length 38 mm



### HFMF367

Thread M10×1 port  
Seat type drill-point  
Overall length 38 mm



### HFMF368

Thread M10×1 port  
Seat type drill-point  
Overall length 38 mm



### HFMF369

Thread M10×1 port  
Seat type drill-point  
Hex 17 mm  
Bend 5°  
Overall length 66 mm



| Right pair HFMF370

### HFMF370

Thread M10×1 port  
Seat type drill-point  
Hex 17 mm  
Bend 20°  
Overall length 66 mm



| Left pair HFMF369

### HFMF372

Thread M10×1 port  
Seat type drill-point  
Overall length 37 mm



### HFMF375

Thread M10×1 port  
Seat type drill-point  
Hex 15 mm  
Overall length 36 mm



### HFMF381

Thread M10×1 port  
Seat type drill-point  
Hex 17 mm  
Bend 45°  
Overall length 57 mm



### HFMF382

Thread M10×1 port  
Seat type drill-point  
Hex 17 mm  
Bend 20°  
Overall length 57 mm



/// E-clips, BQ12, are on page 19.  
Retaining clips are on page 150.

# METRIC FEMALE CONTINUED

 **Drill-point seat**

## HFMF383

Thread M10×1 port  
 Seat type drill-point  
 Hex 17 mm  
 Overall length 109 mm



left

Right pair HFMF384

## HFMF384

Thread M10×1 port  
 Seat type drill-point  
 Hex 17 mm  
 Overall length 109 mm



right

Left pair HFMF383

## HFMF385

Thread M10×1 port  
 Seat type drill-point  
 Hex 17 mm  
 Bend 45°  
 Overall length 58 mm



left

Right pair HFMF386

## HFMF386

Thread M10×1 port  
 Seat type drill-point  
 Hex 17 mm  
 Bend 45°  
 Overall length 58 mm



right

Left pair HFMF385

 **Inverted seat**

## HFMF01

Thread M10×1 port  
 Seat type inverted  
 Hex 17 mm  
 Overall length 38 mm



Low profile LPMF01-M10X1\*  
 LP stainless LPMF01-M10X1SS\*  
 \*LP stem LPS-SI-SAE

## HFMF02

Thread M10×1 port  
 Seat type inverted  
 Flats 17 mm  
 Overall length 47 mm



Low profile LPMF02-M10X1\*  
 \*LP stem LPS-LI-SAE

## HFMF04

Thread M10×1 port  
 Seat type inverted  
 Flats 17 mm  
 Overall length 38 mm



Stainless HFMF04SS  
 Low profile LPMF04\*  
 \*LP stem LPS-SI-SAE

## HFMF06

Thread M10×1 port  
 Seat type inverted  
 Overall length 39 mm



/// E-clips, BQ12, are on page 19.  
 Retaining clips are on page 150.



# METRIC FEMALE CONTINUED

## *Inverted seat*

### HFMF11

Thread M10×1 port  
Seat type inverted  
Flats 19 mm  
Overall length 37 mm



Low profile  
\*LP stem

LPMF11\*  
LPS-SI-SAE

### HFMF14

Thread M10×1 port  
Seat type inverted  
Flats 14 mm  
Overall length 45 mm



Low profile  
\*LP stem

LPMF14\*  
LPS-SI-SAE

### HFMF15

Thread M10×1 port  
Seat type inverted  
Flats 17 mm  
Overall length 77 mm



Low profile

LPMF15

### HFMF16

Thread M10×1 port  
Seat type inverted  
Flats 19 mm  
Overall length 37 mm



Low profile  
\*LP stem

LPMF16\*  
LPS-SI-SAE

### HFMF20

Thread M10×1 port  
Seat type inverted  
Flats 17 mm  
Overall length 38 mm



Low profile  
\*LP stem

LPMF20\*  
LPS-SI-SAE

### HFMF26

Thread M10×1 port  
Seat type inverted  
Flats 17 mm  
Overall length 38 mm



### HFMF28

Thread M10×1 port  
Seat type inverted  
Flats 17 mm  
Overall length 37 mm



Low profile  
\*LP stem

LPMF28\*  
LPS-SI-SAE

### HFMF29

Thread M10×1 port  
Seat type inverted  
Hex 17 mm  
Overall length 54 mm



### HFMF31

Thread M10×1 port  
Seat type inverted  
Flats 17 mm  
Overall length 45 mm



### HFMF93

Thread M10×1 port  
Seat type inverted  
Hex 17 mm  
Overall length 47 mm



# METRIC FEMALE CONTINUED

## Inverted seat

### HFMF120

Thread	M10×1 port
Seat type	inverted
Flats	19mm
Bend	90°
Overall length	49mm



| Left pair      HFMF121

### HFMF121

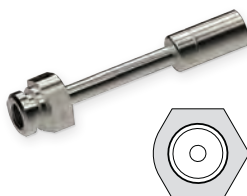
Thread	M10×1 port
Seat type	inverted
Flats	19mm
Bend	90°
Overall length	49mm



| Right pair      HFMF120

### HFMF308

Thread	M10×1 port
Seat type	inverted
Flats	19mm
Bend	straight
Overall length	89mm



### HFMF366

Thread	M10×1 port
Seat type	inverted
Flats	16mm
Overall length	45mm



### HFMF393

Thread	M10×1 port
Seat type	inverted
Flats	17mm
Overall length	72mm



| Low profile      LPMF15

## CLIP MOUNT M10×1.25

### Inverted seat

### HFMF09

Thread	M10×1.25 port
Seat type	inverted
Hex	17mm
Overall length	37mm



| Low profile      LPMF09-M10X125\*  
\*LP stem      LPS-LI-SAE

### Drill-point seat

### HFMF21

Thread	M10×1.25 port
Seat type	drill-point
Hex	17mm
Overall length	47mm



/// E-clips, BQ12, are on page 19.  
Retaining clips are on page 150.



# METRIC FEMALE CONTINUED

## CLIP MOUNT M10×1.5

 *Inverted seat*

### HFMF128

Thread M10×1.5 port  
Seat type inverted  
Flats 5/8"  
Overall length 43mm



### HFMF132

Thread M10×1.5 port  
Seat type inverted  
Overall length 39.4mm



### HFMF397

Thread M10×1.5 port  
Seat type inverted  
Overall length 45mm



## CLIP MOUNT M12×1

 *Drill-point seat*

### HFMF47

Thread M12×1 port  
Seat type drill-point  
Flats 5/8"  
Overall length 46mm



| Low profile LPMF47Z

### HFMF51

Thread M12×1 port  
Seat type drill-point  
Flats 16mm  
Overall length 47mm



### HFMF191

Thread M12×1 port  
Seat type drill-point  
Hex 19mm  
Overall length 45mm



 *Inverted seat*

### HFMF07

Thread M12×1 port  
Seat type inverted  
Overall length 45mm



### HFMF10

Thread M12×1 port  
Seat type inverted  
Hex 21mm  
Overall length 46mm



| Low profile LPMF10\*  
\*LP stem LPS-LI-SAE

# METRIC FEMALE CONTINUED

 *Inverted seat*

## HFMF19

Thread M12×1 port  
 Seat type inverted  
 Hex 19mm  
 Overall length 47mm



## HFMF42

Thread M12×1 ports (2)  
 Seat type inverted  
 Overall length 57mm



## HFMF43

Thread M12×1 port  
 Seat type inverted  
 Overall length 45mm



## HFMF91

Thread M12×1 port  
 Seat type inverted  
 Hex 19mm  
 Overall length 40mm



## HFMF92

Thread M12×1 port  
 Seat type inverted  
 Flats 16mm  
 Overall length 45mm



# CLIP MOUNT M12×1.25

 *Drill-point seat*

## HFMF57

Thread M12×1.25 port  
 Seat type drill-point  
 Hex 19mm  
 Overall length 46mm



///  
 E-clips, BQ12, are on page 19.  
 Retaining clips are on page 150.

# METRIC FEMALE CONTINUED

## SPLINE MOUNT M10×1

 *Drill-point seat*

### HFMF22

Thread M10×1 port  
Seat type drill-point  
Overall length 39mm



### HFMF27

Thread M10×1 port  
Seat type drill-point  
Overall length 36mm



## BULKHEAD MOUNT M10×1

 *Drill-point seat*

### HFMFX04

Thread M10×1 port  
Seat type drill-point  
Mount thread 5/8-18 UNF  
Hex 19mm  
Overall length 45mm



### HFMFX04-M16

Thread M10×1 port  
Seat type drill-point  
Mount thread M16×1.5  
Hex 17mm  
Overall length 46mm



 *Inverted seat*

### HFMFX01

Thread M10×1 port  
Seat type inverted  
Mount thread 5/8-18 UNF  
Hex 19mm  
Overall length 45mm



## BULKHEAD MOUNT M10×1.25

 *Inverted seat*

### HFMFX02

Thread M10×1.25 port  
Seat type inverted  
Mount thread 5/8-18 UNF  
Hex 19mm  
Overall length 45mm



## BULKHEAD MOUNT M12×1

 *Drill-point seat*

### HFMFX10

Thread M12×1 port  
Seat type drill-point  
Mount thread M20×1.5  
Hex 22mm  
Overall length 49mm



/// Bulkhead nuts are on page 148.

# IMPERIAL MALE

## JIC MALE 3/8-24 UNF

### HFIM28

Thread	3/8-24 UNF stud
Dash size	-03 JIC
Stud length	12.2mm
Hex	14mm
Overall length	42mm



Low profile      LPIM28-6

## JIC MALE 7/16-20 UNF

### HFIM29

Thread	7/16-20 UNF stud
Dash size	-04 JIC
Stud length	14mm
Hex	14mm
Overall length	43mm



Low profile      LPIM29-7

## BOLT MOUNT 1/8-27 NPT

### HFIM30

Thread	1/8-27 NPT stud
Mount hole	6.6mm
Overall length	50mm



## BULKHEAD MOUNT 3/8-24 UNF

### HFIM02

Thread	3/8-24 UNF stud
Stud length	24mm
Hex	16mm
Overall length	52mm



Low profile      LPIM02-6  
LP stainless      LPIM02-6SS

### HFIM05

Thread	3/8-24 UNF stud
Stud length	12mm
Mount thread	1/2-20 UNF
Hex	16mm
Overall length	55mm



### HFIM12

Thread	3/8-24 UNF stud
Stud length	24mm
Hex	5/8"
Overall length	75mm



/// Bulkhead nuts are on page 148.

# IMPERIAL MALE CONTINUED

## BULKHEAD 7/16-20 UNF

### HFIM06

Thread	7/16-20 UNF stud
Stud length	28 mm
Hex	16 mm
Overall length	56 mm



## BULKHEAD 1/2-20 UNF

### HFIM07

Thread	1/2-20 UNF stud
Stud length	32 mm
Hex	3/4"
Overall length	60 mm



## CLIP MOUNT 7/16-20 UNF

### HFIM22

Thread	7/16-20 UNF stud
Stud length	13 mm
Hex	16 mm
Overall length	51 mm



/// E-clips, BQ12, are on page 19.  
Retaining clips are on page 150.

## STANDARD 1/8-27 NPT

### HFIM19

Thread	1/8-27 NPT stud
Hex	14 mm
Overall length	40 mm



Stainless	HFIM19SS
Low profile	LPIM19

## STANDARD 1/8-28 BSPP

### HFIM32

Thread	1/8-28 BSPP stud
Stud length	6 mm
Hex	14 mm
Overall length	37 mm



## STANDARD 3/8-20 BSF

### HFIM15

Thread	3/8-20 BSF stud
Stud length	12.5 mm
Hex	5/8"
Overall length	40 mm



# IMPERIAL MALE CONTINUED

## STANDARD 3/8-24 UNF

### HFIM01

Thread 3/8-24 UNF stud  
 Stud length 13 mm  
 Hex 16 mm  
 Overall length 40 mm



Brass HFIM01B  
 Stainless HFIM01SS  
 Low profile LPIM01-6

### HFIM01B

Thread 3/8-24 UNF stud  
 Stud length 12.5 mm  
 Hex 14 mm  
 Overall length 40 mm



*brass*

### HFIM10

Thread 3/8-24 UNF stud  
 Stud length 12 mm  
 Hex 16 mm  
 Overall length 44 mm



### HFIM11

Thread 3/8-24 UNF stud  
 Stud length 13 mm  
 Hex 5/8"  
 Overall length 68 mm



### HFIM18

Thread 3/8-24 UNF stud  
 Stud length 12 mm  
 Hex 16 mm  
 Overall length 53 mm



### HFIM21

Thread 3/8-24 UNF stud  
 Stud length 12.5 mm  
 Hex 5/8"  
 Overall length 53 mm



### HFIM25

Thread 3/8-24 UNF stud  
 Stud length 12 mm  
 Hex 16 mm  
 Overall length 71 mm



### HFIM35

Thread 3/8-24 UNF stud  
 Stud length 11.8 mm  
 Hex 9/16"  
 Overall length 45 mm



### HFIM36

Thread 3/8-24 UNF stud  
 Stud length 11.8 mm  
 Hex 14 mm  
 Overall length 52 mm



## STANDARD 7/16-20 UNF

### HFIM03

Thread 7/16-20 UNF stud  
 Stud length 12 mm  
 Hex 16 mm  
 Overall length 40 mm



Stainless HFIM03SS  
 Low profile LPIM03-7

### HFIM09

Thread 7/16-20 UNF stud  
 Stud length 13.5 mm  
 Hex 16 mm  
 Overall length 69 mm



## IMPERIAL MALE *CONTINUED*

### HFIM16

Thread	7/16-20 UNF stud
Stud length	1/2"
Hex	17 mm
Overall length	61 mm



### HFIM27

Thread	7/16-20 UNF stud
Stud length	13 mm
Hex	5/8"
Overall length	63 mm



### HFIM40

Thread	7/16-20 UNF stud
Stud length	13.5 mm
Hex	16 mm
Overall length	42 mm



## STANDARD 7/16-24 UNS

### HFIM13

Thread	7/16-24 UNS stud
Stud length	12 mm
Hex	16 mm
Overall length	40 mm



| Low profile LPIM13-7

### HFIM14

Thread	7/16-24 UNS stud
Stud length	12 mm
Hex	16 mm
Overall length	78 mm



## STANDARD 1/2-20 UNF

### HFIM08

Thread	1/2-20 UNF stud
Stud length	15 mm
Hex	17 mm
Overall length	43 mm



### HFIM24

Thread	1/2-20 UNF stud
Stud length	12 mm
Hex	5/8"
Overall length	44 mm



## STANDARD 11/16-16 UN

### HFIM04

Thread	11/16-16 UN stud
Stud length	20 mm
Hex	19 mm
Overall length	50 mm





# METRIC MALE

## BULKHEAD MOUNT M10×1

### HFMM02

Thread	M10×1 stud
Stud length	23 mm
Hex	15 mm
Overall length	51 mm



Low profile

LPMM02-M10X1

### HFMM18

Thread	M10×1 stud
Stud length	28 mm
Overall length	56 mm



### HFMM20

Thread	M10×1 stud
Stud length	24 mm
Hex	14 mm
Overall length	81 mm



## BULKHEAD MOUNT M10×1.25

### HFMM11

Thread	M10×1.25 stud
Stud length	15 mm
Hex	14 mm
Overall length	43 mm



### HFMM21

Thread	M10×1.25 stud
Stud length	24 mm
Hex	14 mm
Overall length	76 mm



## BULKHEAD MOUNT M12×1

### HFMM09

Thread	M12×1 stud
Stud length	28 mm
Hex	17 mm
Overall length	56 mm



### HFMM10

Thread	M12×1.5 stud
Stud length	33 mm
Hex	17 mm
Overall length	61 mm



/// Bulkhead nuts are on page 148.

# METRIC MALE CONTINUED

## CLIP MOUNT M10×1

Not all clip mount fittings include an e-clip. Refer to each fitting's image to see if a clip is included.

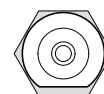
### HFMM12

Thread	M10×1 stud
Stud length	15 mm
Hex	17 mm
Overall length	50 mm



### HFMM303

Thread	M10×1 stud
Stud length	16 mm
Hex	17 mm
Overall length	52 mm



/// E-clips, BQ12, are on page 19.  
Retaining clips are on page 150.

## STANDARD M10×1

### HFMM01

Thread	M10×1 stud
Stud length	17 mm
Hex	16 mm
Overall length	45 mm



Low profile LPMM01-M10X1

### HFMM03

Thread	M10×1 stud
Stud length	14.3 mm
Hex	14 mm
Overall length	43 mm



Low profile LPMM03-M10X1  
LP zinc-nickel LPMM03-M10X1Z

### HFMM06

Thread	M10×1 stud
Stud length	13 mm
Hex	16 mm
Overall length	41 mm



Stainless HFMM06SS  
Low profile LPMM06-M10X1

### HFMM08

Thread	M10×1 stud
Stud length	17 mm
Hex	17 mm
Overall length	78 mm



### HFMM22

Thread	M10×1 stud
Stud length	33 mm
Hex	14 mm
Overall length	62 mm



LP zinc-nickel LPMM22Z

### HFMM23

Thread	M10×1 stud
Stud length	14 mm
Hex	14 mm
Overall length	43 mm



# METRIC MALE CONTINUED

---

## STANDARD M10×1.25

### HFMM04

Thread	M10×1.25 stud
Stud length	13 mm
Hex	16 mm
Overall length	41 mm



Low profile      LPMM04-M10X125

## STANDARD M10×1.5

### HFMM24

Thread	M10×1.5 stud
Stud length	13 mm
Hex	16 mm
Overall length	41 mm



---

## STANDARD M12×1

### HFMM05

Thread	M12×1 stud
Stud length	18 mm
Hex	17 mm
Overall length	47 mm



### HFMM13

Thread	M12×1 stud
Stud length	23 mm
Hex	16 mm
Overall length	77 mm



---

## STANDARD M12×1.25

### HFMM17

Thread	M12×1.25 stud
Stud length	17 mm
Hex	17 mm
Overall length	45 mm



# CENTER SUPPORT

## BRACKET MOUNT

### HFC04

Mount hole 6.5mm  
Width 39mm  
Overall length 30mm



### HFC05

Mount hole 8.5mm  
Width 20mm  
Overall length 30mm



| Low profile LPC05

### HFC18

Mount hole 8.7mm  
Width 24mm  
Overall length 48mm



### HFC19

Mount hole 8.7mm  
Width 24mm  
Overall length 48mm



### HFC316

Mount hole 10mm  
Width 22mm  
Overall length 36mm



### HFC319

Mount hole 9mm  
Width 45mm  
Overall length 50mm



| Right pair HFC320

*left*

### HFC320

Mount hole 9mm  
Width 45mm  
Overall length 50mm



| Left pair HFC319

*right*

### HFC321

Mount hole 9mm  
Width 55mm  
Overall length 50mm



| Right pair HFC324

*left*

### HFC322

Mount hole 8.5mm  
Width 40mm  
Overall length 42mm



| Right pair HFC325

*left*

### HFC323

Mount hole 8.5mm  
Width 45mm  
Overall length 48mm



| Right pair HFC326

*left*

# CENTER SUPPORT CONTINUED

## HFC324

Mount hole 9mm  
Width 55mm  
Overall length 50mm



*right*

| Left pair HFC321

## HFC325

Mount hole 8.5mm  
Width 40mm  
Overall length 42mm



*right*

| Left pair HFC322

## HFC326

Mount hole 8.5mm  
Width 45mm  
Overall length 48mm



*right*

| Left pair HFC323

## HFC338

Mount hole 9mm  
Width 18mm  
Overall length 53mm



*left*

| Right pair HFC339

## HFC339

Mount hole 9mm  
Width 18mm  
Overall length 53mm



*right*

| Left pair HFC338

## HFC341

Mount hole 9mm  
Width 23mm  
Overall length 29mm



| Right pair HFC340

## HFC342

Mount hole 9mm  
Width 23mm  
Overall length 29mm



## HFC343

Mount hole 8.5mm  
Width 40mm  
Overall length 37mm



*left*

## HFC344

Mount hole 8.5mm  
Width 40mm  
Overall length 37mm



*right*

| Left pair HFC343

## HFC345

Mount hole 10mm  
Width 100mm  
Overall length 44mm



| Right pair HFC346

## HFC346

Mount hole 10mm  
Width 100mm  
Overall length 44mm



| Left pair HFC345

## HFC347

Mount nut M8 x 1  
Width 20mm  
Overall length 25mm



# CENTER SUPPORT CONTINUED

## HFC348

Mount nut M8×1.25  
Width 22mm  
Overall length 66mm



## HFC350

Mount hole 9mm  
Width 67mm  
Overall length 25mm



## HFC351

Mount hole 9.5mm  
Width 90mm  
Overall length 24mm



## HFC352

Mount hole 9.5mm  
Width 90mm  
Overall length 24mm



Right pair HFC352 *left*

Left pair HFC351 *right*

## HFC353

Mount hole 8.5mm  
Width 24mm  
Overall length 73mm



## HFC354

Mount hole 8.5mm  
Width 24mm  
Overall length 73mm

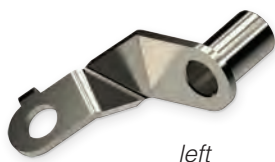


Right pair HFC354

Left pair HFC353

## HFC355

Mount hole 10mm  
Width 20mm  
Overall length 40mm



## HFC356

Mount hole 10mm  
Width 20mm  
Overall length 40mm



Right pair HFC356

Left pair HFC355

## HFC357

Mount hole 10mm  
Width 88mm  
Overall length 50mm



## HFC358

Mount hole 10mm  
Width 88mm  
Overall length 50mm



Right pair HFC358

Left pair HFC357

## HFC359

Mount hole 9mm  
Width 25mm  
Overall length 60mm



## HFC360

Mount hole 9mm  
Width 20mm  
Overall length 25mm



Right pair HFC360 *left*

Left pair HFC359 *right*



# CENTER SUPPORT CONTINUED

## HFC361

Mount nut M6 × 1  
 Width 35 mm  
 Overall length 53 mm



Right pair HFC362

## HFC362

Mount nut M6 × 1  
 Width 35 mm  
 Overall length 53 mm



Left pair HFC361

## HFC365

Mount hole 9 mm  
 Width 35 mm  
 Overall length 42 mm



Right pair HFC366

## HFC366

Mount hole 9 mm  
 Width 35 mm  
 Overall length 42 mm



Left pair HFC365

## HFC367

Mount hole 10 mm  
 Width 40 mm  
 Overall length 42 mm



Right pair HFC368

## HFC368

Mount hole 10 mm  
 Width 40 mm  
 Overall length 42 mm



Left pair HFC367

## HFC369

Mount hole 7 mm  
 Width 30 mm  
 Overall length 58 mm



Right pair HFC370

## HFC370

Mount hole 7 mm  
 Width 30 mm  
 Overall length 58 mm



Left pair HFC369

## HFC371

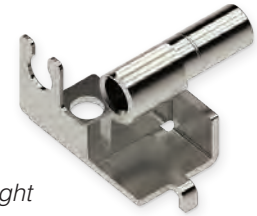
Mount hole 10 mm  
 Width 33 mm  
 Overall length 55 mm



Right pair HFC372

## HFC372

Mount hole 10 mm  
 Width 33 mm  
 Overall length 55 mm



Left pair HFC371

## HFC373

Mount hole 8 mm  
 Width 45 mm  
 Overall length 75 mm



Right pair HFC374

## HFC374

Mount hole 8 mm  
 Width 45 mm  
 Overall length 75 mm



Left pair HFC373



# CENTER SUPPORT CONTINUED

## HFC379

Mount hole 10 mm  
Width 34 mm  
Overall length 50 mm

| Right pair HFC380



## HFC380

Mount hole 10 mm  
Width 34 mm  
Overall length 50 mm

| Left pair HFC379



## HFC381

Mount hole 10 mm  
Width 35 mm  
Overall length 69 mm

| Right pair HFC382



## HFC382

Mount hole 10 mm  
Width 35 mm  
Overall length 69 mm

| Left pair HFC381



# CLIP MOUNT

Not all clip mount fittings include an e-clip. Refer to each fitting's image to see if a clip is included.

## HFC01

Hex 17 mm  
Width 17 mm  
Overall length 33 mm

| Low profile LPC01



## HFC02

Hex 17 mm  
Width 17 mm  
Overall length 34 mm

| Low profile LPC02



## HFC06

Flats 17 mm  
Width 17 mm  
Overall length 34 mm

| Low profile LPC06



## HFC07

Flats 19 mm  
Width 19 mm  
Overall length 35 mm

| Low profile LPC07



## HFC09

Flats 17 mm  
Width 17 mm  
Overall length 34 mm

| Low profile LPC09



## HFC10

Flats 19 mm  
Width 19 mm  
Overall length 35 mm

| Low profile LPC10



# CENTER SUPPORT CONTINUED

## HFC12

Flats 17 mm  
 Width 17 mm  
 Overall length 35 mm



## HFC13

Flats 17 mm  
 Width 17 mm  
 Overall length 33 mm



## HFC15

Hex 19 mm  
 Width 19 mm  
 Overall length 37 mm



## HFC17

Flats 16 mm  
 Width 16 mm  
 Overall length 37 mm



| Low profile      LPC17

## HFC301A

Width 20 mm  
 Overall length 33 mm

| Low profile      LPC301  
 | LP zinc-nickel      LPC301Z



## HFC307

Flats 16.8 mm  
 Width 19 mm  
 Overall length 36 mm



## HFC331

Hex 17 mm  
 Width 33 mm  
 Overall length 34 mm

| Low profile      LPC331



/// E-clips, BQ12, are on page 19.  
 Retaining clips are on page 150.

# BRACKETS

## FITTING BRACKETS ATTACH WITH CLIP

### BQB01

Mount hole 9mm



### BQB04

Mount hole 8.4mm



### BQB06

Mount hole 5mm



### BQB244

Mount hole 6.8mm



### BQB259

Mount hole 8.8mm  
Hex hole 16mm



### BQB315

Mount hole 10mm

Right pair BQB316



### BQB316

Mount hole 10mm

Left pair BQB315



### BQB317

Mount hole 9mm

Right pair BQB318



### BQB318

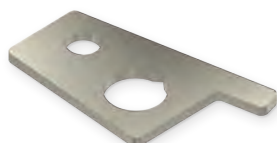
Mount hole 9mm

Left pair BQB317



### BQB319

Mount hole 9mm



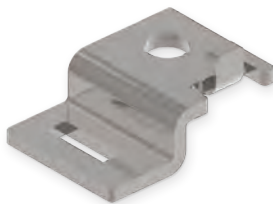
/// Retaining clips are on page 150.

# BRACKETS CONTINUED

## FITTING BRACKETS ATTACH WITH SCREWS

### BQB05

Mount hole 9mm



### BQB07

Mount hole 12.4mm



### BQB10

Mount hole 9.6mm

Right pair

BQB11



left

### BQB11

Mount hole 9.6mm

Left pair

BQB10



right

### BQB14

Mount hole 8.6mm

Right pair

BQB15



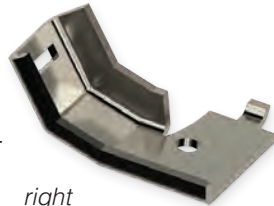
left

### BQB15

Mount hole 8.6mm

Left pair

BQB14



right

### BQB20

Mount hole 9mm

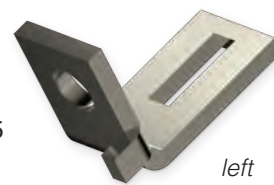


### BQB24

Mount hole 8.8mm

Right pair

BQB25



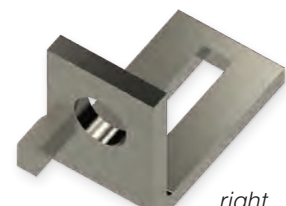
left

### BQB25

Mount hole 8.8mm

Left pair

BQB24



right

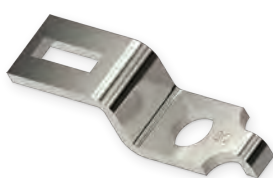
### BQB26

Mount hole 7mm



### BQB29

Mount hole 9.6mm



### BQB30

Mount hole 10.4mm



# BRACKETS *CONTINUED*

## BQB39

Mount hole 9 mm

Right pair

BQB40



*left*

## BQB40

Mount hole 9 mm

Left pair

BQB39



*right*

## BQB41

Mount hole 9 mm

Right pair

BQB42



*left*

## BQB42

Mount hole 9 mm

Left pair

BQB41



*right*

## BQB50

Mount hole 8 mm × 10 mm



## BQB64

Mount hole 8.3 mm

Right pair

BQB65



*left*

## BQB65

Mount hole 8.3 mm

Left pair

BQB64



*right*

## BQB75

Mount hole 8.5 mm



## BQB83

Mount hole 8.8 mm



## BQB86

Mount hole 8.5 mm

Right pair

BQB87



*left*

## BQB87

Mount hole 8.5 mm

Left pair

BQB86



*right*

## BQB88

Mount hole 7.7 mm



/// Find **Bracket Retaining Screws**, BQ71, on page 19.

# BRACKETS CONTINUED

## BQB89

Mount hole 10.4mm



## BQB90

Mount hole 9mm

Right pair

BQB91



left

## BQB91

Mount hole 9mm

Left pair

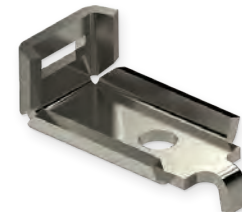
BQB90



right

## BQB105

Mount hole 9mm



## BQB111

Mount hole 8.8mm / 8.8mm x 12mm

Right pair

BQB112



left

## BQB112

Mount hole 8.8mm / 8.8mm x 12mm

Left pair

BQB111



right

## BQB115

Mount hole 9.6mm



## BQB118

Mount hole 9.4mm



## BQB119

Mount hole 9.2mm

Right pair

BQB120



left

## BQB120

Mount hole 9.2mm

Left pair

BQB119



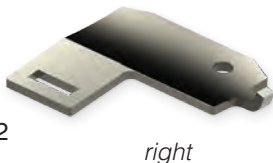
right

## BQB151

Mount hole 6.4mm

Left pair

BQB152



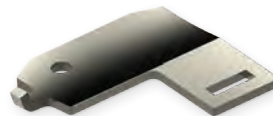
right

## BQB152

Mount hole 6.4mm

Right pair

BQB151



left



# BRACKETS *CONTINUED*

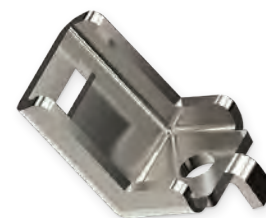
## BQB166

Mount hole 9mm



## BQB171

Mount hole 8.2mm



## BQB185

Mount hole 16.3mm

Left pair BQB186



## BQB186

Mount hole 16.3mm

Right pair BQB185



## BQB312

Mount hole 6.3mm

Right pair BQB313



## BQB313

Mount hole 6.3mm

Left pair BQB312



## BQB336

Mount hole 7.5mm

Right pair BQB337



## BQB337

Mount hole 7.5mm

Left pair BQB336



## BQB338

Mount hole 10mm

Right pair BQB339



## BQB339

Mount hole 10mm

Left pair BQB338



## BQB415

Hole 5/16"

Wire bracket, designed for HFIF120.



/// Find **Bracket Retaining Screws, BQ71**, on page 19.



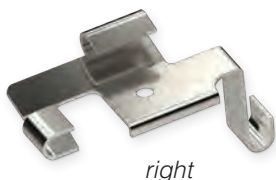
# BRACKETS CONTINUED

## CENTER BRACKETS

### BQB08

Mount hole 8.8mm

Left pair BQB09



### BQB09

Mount hole 8.8mm

Right pair BQB08



### BQB18

Mount hole 8.9mm

Right pair BQB19



### BQB19

Mount hole 8.9mm

Left pair BQB18



### BQB23

Mount hole 8.8mm



### BQB35

Mount nut M6 x 1



### BQB36

Mount hole 8.4mm

Right pair BQB37



### BQB37

Mount hole 8.4mm

Left pair BQB36



### BQB38

Mount thread 5/16-18 UNF



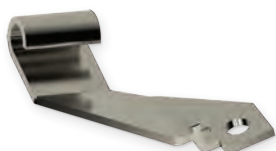
### BQB48

Mount hole 6.4mm



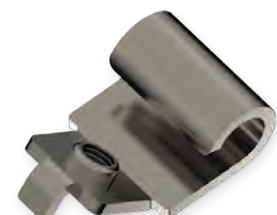
### BQB52

Mount hole 9.2mm



### BQB69

Mount nut M8 x 1.25



# BRACKETS *CONTINUED*

## BQB72

Mount hole 6.9mm

| Right pair

BQB73

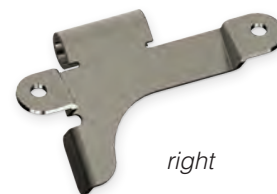


## BQB73

Mount hole 6.9mm

| Left pair

BQB72



## BQB85

Mount hole 9.2mm



## BQB109

Mount hole 10mm x 7mm

| Right pair

BQB110



## BQB110

Mount hole 10mm x 7mm

| Left pair

BQB109



## BQB162

Mount hole 6.4mm / 5mm

| Left pair

BQB163



## BQB163

Mount hole 6.4mm / 5mm

| Right pair

BQB162



## BQB168

Mount nut M6x1



## BQB169

Mount hole 9mm



## BQB257

Mount hole 8.5mm



## BQB258

Mount hole 8.7mm



## BQB284

Mount hole 7mm / 6.2mm

| Left pair

BQB285



## BQB285

Mount hole 7mm / 6.2mm

| Right pair

BQB284



# BRACKETS CONTINUED

## CENTERS WITH GROMMET

The following center brackets include the BQ234 grommet pictured.

### BQB31

Mount hole 8.6mm



### BQB174

Mount hole 9mm

Left pair BQB195



*right*

### BQB195

Mount hole 9mm

Right pair BQB174



*left*

### BQB221

Mount hole 9mm



### BQB222

Mount hole 9mm

Left pair BQB223



*right*

### BQB223

Mount hole 9mm

Right pair BQB222



*left*

### BQB224

Mount hole 9mm

Left pair BQB225



*right*

### BQB225

Mount hole 9mm

Right pair BQB224



*left*